



**Georgia** Institute  
of **Technology**

**Annual First-Time Freshman  
Retention and Graduation Study**

**Office of Institutional Research and Planning**

**Fall 2014**

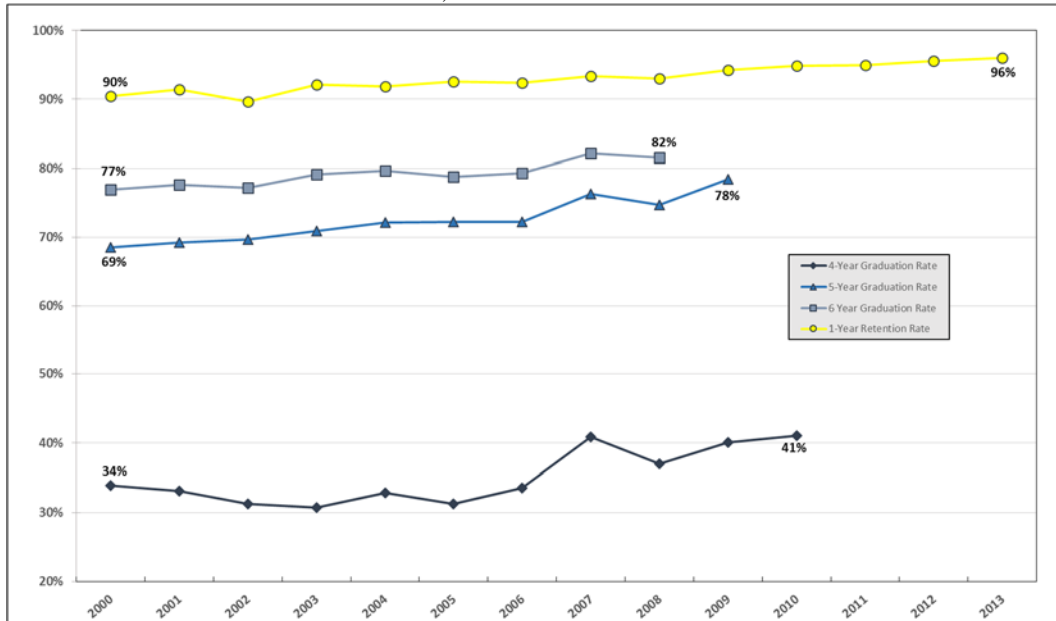
**Georgia Institute of Technology**  
**Institutional Research and Planning**  
**Annual First-Time Freshman Retention and Graduation Study**

Institutional Research and Planning has studied the retention of Georgia Tech students from 1993 through 2014. Cohorts have been defined as first-time students who entered in the respective summer or fall terms and were full-time in the cohort-year fall term. Retention is defined as being enrolled as of (taking classes or participating in co-op/internship programs) or having graduated by each successive fall term. This report tracks retention through year seven and graduation through year six for each cohort in total, by gender, by ethnicity, by college of entry and by Pell status (see Tables 3 through 12). Chi-Square tests of significance ( $p \leq 0.05$ ) on each cohort's progression were conducted by these characteristics. Second-year retention was examined by an expanded set of characteristics for the 2009 through 2013 cohorts (see Table 1 and Table 2).

### **Executive Summary**

- The percentage of first-time, full-time freshman students returning for their second year rose from 90% for the 2000 cohort to 96% for the 2012 cohort. Second year retention remained 96% for the fall 2013 cohort. Four, five and six-year graduation rates have increased over the same time frame, with six-year graduation rates rising from 77% for the fall 2000 cohort to the historic rate of 82% for the fall 2007 cohort group. The six-year graduation rate remained at this historic level for the fall 2008 cohort group. (Chart 1).
- The four-year graduation rate rose to 41% for the 2010 cohort group, a rate that has not been reached since the 2007 cohort. The five-year graduation rate rose to a historic level of 78% for the 2009 cohort. (Chart 1).
- Retention and graduation rates for students receiving Pell were tracked for the second time in this study. Retention rates for those receiving Pell were similar to those students not receiving it; however, graduation rates at the fourth and fifth year were significantly higher for those not receiving the grant (Tables 8 and 12).
- Females were retained at a higher rate than males in all cohorts examined. Second year retention for females in the fall 2013 cohort decreased slightly while second year retention for males increased nearly 1% from cohort 2012 to cohort 2013. Four-year graduation rates for the 2010 cohort decreased for females (47.4%), while it increased to the highest rate for males (37.4%). The six-year graduation rates for females reached a historic level for the 2008 cohort, while males decreased slightly over the 2007 cohort group. (Tables 5 and 9).
- Since the 2009 cohort group, significant differences in retention by ethnicity have been observed for each year except for the 2<sup>nd</sup> year retention rate for the 2010 cohort group. For the most recent cohorts International students experienced the lowest retention rates. However, International students typically graduated at rates higher than the institute average, so stop-out patterns may be a contributing factor to the retention rates observed. Significant differences in four, five, and six year graduation rates were noted for all cohorts by ethnicity, with the exception of the 2008 cohort group. (Tables 6 and 10).
- Significant differences were observed by college of entry for retention for the fall 2013 cohort group. Significant differences were observed for each four-year graduation rate by college of entry since 2000. The College of Architecture experienced the highest four-year graduation rate (61.5%) for the 2010 cohort group. Except for the 2004 cohort, no significant differences in six-year graduation rates were observed (Tables 7 and 11).

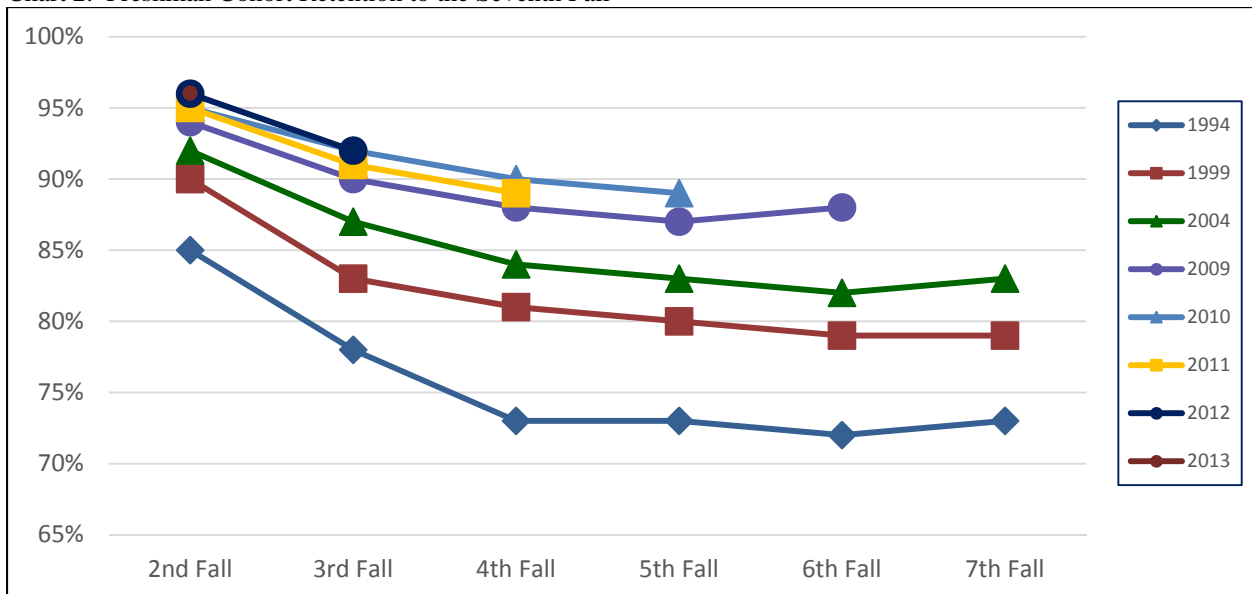
Chart 1. Retention and Graduation Rates, 2000-2013



### Retention Highlights

The second-year retention rates have improved from 90% in 2002 to a historic rate of 96% for the 2012 and 2013 cohort groups. High retention rates for third-year (91%) and sixth-year (84%) were maintained for the 2011 and 2008 cohorts, respectively. Historic fourth-year (90%), fifth-year (87%), and seventh-year (85%) retention rates were observed for the 2010, 2009 and 2007 cohorts, respectively (Table 3).

Chart 2. Freshman Cohort Retention to the Seventh Fall



For the 2013 cohort, retention rates by gender remained high with 96% of males and 97% of females returning fall 2014 for an overall retention rate of 96% (Table 5). Asian students were retained at a higher rate (98%) than any other race/ethnicity (Table 6). Students in the College of Sciences were retained at a higher rate (97%) than any other college (Table 7).

Table 1. Chi-Square Results for Retention to the Second Year

	2009 Cohort	2010 Cohort	2011 Cohort	2012 Cohort	2013 Cohort
<b>Cohort</b>	94.2%	94.9%	94.8%	95.5%	96.0%
<b>Female</b>	94.9%	95.9%	95.2%	* 97.1%	96.8%
<b>Male</b>	93.8%	94.3%	94.6%	94.7%	95.6%
<b>Asian</b>	* 96.6%	95.7%	* 97.3%	* 98.7%	* 97.8%
<b>Black or African American</b>	94.9%	92.4%	93.4%	92.3%	93.0%
<b>White</b>	94.6%	95.4%	94.9%	95.0%	96.9%
<b>Hispanic or Latino</b>	93.6%	95.2%	95.6%	96.6%	94.8%
<b>Other</b>	92.9%	92.7%	92.7%	96.9%	95.8%
<b>International</b>	88.6%	91.4%	91.6%	93.8%	91.2%
<b>International</b>	* 88.6%	* 91.4%	* 91.6%	93.8%	* 91.2%
<b>Underrepresented Minority</b>	96.6%	94.0%	94.5%	94.8%	93.6%
<b>Not Underrepresented Minority</b>	96.6%	95.3%	95.3%	96.0%	97.1%
<b>In-State</b>	* 95.8%	95.5%	* 95.9%	96.2%	* 97.0%
<b>Out-of-State</b>	91.8%	93.8%	93.1%	94.8%	94.9%
<b>International</b>	* 88.6%	* 91.4%	* 91.6%	93.8%	* 91.2%
<b>U.S. Resident</b>	94.9%	95.2%	95.2%	95.8%	96.7%
<b>Fraternity/Sorority</b>	95.6%	96.1%	* 97.2%	* 97.9%	* 97.8%
<b>Non-Member</b>	93.8%	94.6%	94.0%	95.0%	95.4%
<b>Off Campus</b>	91.2%	* 90.2%	93.1%	90.3%	* 88.5%
<b>On Campus Housing</b>	94.3%	95.0%	94.9%	95.7%	96.2%
<b>Enrolled in GT1000</b>	* 95.0%	* 95.9%	95.2%	95.9%	96.0%
<b>Not Enrolled in GT1000</b>	92.5%	98.8%	94.3%	95.0%	96.1%
<b>Freshman Experience</b>	94.5%	95.1%	94.9%	* 96.0%	* 96.7%
<b>Non-Freshman Experience</b>	93.1%	94.3%	94.5%	91.4%	90.8%
<b>GT1000 &amp; FE</b>	* 95.3%	* 96.6%	95.3%	* 96.5%	* 97.0%
<b>GT1000 or FE or Neither</b>	93.0%	93.3%	94.2%	94.4%	94.9%
<b>Pell</b>	* 91.0%	* 92.6%	94.8%	94.5%	* 93.9%
<b>No Pell</b>	94.7%	95.3%	94.9%	95.7%	96.4%
<b>Architecture</b>	92.6%	95.6%	93.5%	96.7%	* 92.9%
<b>Computing</b>	94.5%	94.8%	94.8%	95.9%	96.3%
<b>Engineering</b>	94.4%	95.1%	95.0%	96.0%	96.5%
<b>Ivan Allen</b>	91.7%	96.0%	94.5%	93.0%	90.6%
<b>Scheller College of Business</b>	96.4%	93.8%	97.1%	93.0%	92.9%
<b>Sciences</b>	93.7%	93.4%	93.0%	94.1%	97.1%
<b>Good Standing</b>	95.8%	96.7%	96.5%	96.3%	97.0%
<b>Warning</b>	82.1%	74.0%	71.9%	79.6%	83.7%
<b>Probation</b>	39.1%	26.5%	36.4%	36.4%	72.7%
<b>Probation from Dismissal</b>					25.0%
<b>Academic Dismissal</b>					0.0%

\* Significant difference ( $p < 0.05$ )

1 Other includes: American Indian or Alaskan Native, Native Hawaiian or Other Pacific Islander, Unknown and Two or More Races.

2 Underrepresented Minority includes American Indian or Alaskan Native, Black or African American, Hispanic or Latino and Native Hawaiian or Other Pacific Islander.

- Significant differences in second-year retention were noted for the following characteristics: ethnicity, minority status, residency, citizenship, Greek participation, housing, freshman experience participation, as well as participation in both GT1000 and freshman experience, Pell status and college of entry for the 2013 freshman cohort.
  - Through the five cohorts examined, ethnicity, minority status, participation in both GT1000 and freshman experience and International status were observed to have the most significant second-year retention differences.
  - Gender and college of entry showed the least significant second-year retention differences (Table 1).
- Significant differences in second-year retention were also noted for the following characteristics: SAT Math, SAT Verbal, SAT Writing, High School GPA, Admissions Index and First-Year GPA for the 2013 cohort group.
  - Over the last five cohorts, High School GPA, Admissions Index and First-Year GPA were the characteristics most frequently observed to have significant second-year retention differences among the five most recent cohorts.

Table 2. T-test Results for Retention to the Second Year

Category	Retention Status	2009 Cohort	2010 Cohort	2011 Cohort	2012 Cohort	2013 Cohort
SAT Math	Retained	704	*705	*712	*720	*728
	Not Retained	698	679	700	692	717
SAT Verbal	Retained	*652	*664	672	*677	*694
	Not Retained	656	639	676	652	677
SAT Writing	Retained	*633	*645	654	*660	*677
	Not Retained	616	610	655	631	659
High School GPA	Retained	*3.82	*3.87	*3.89	*3.90	*3.95
	Not Retained	3.7	3.75	3.83	3.78	3.83
Admissions Index	Retained	*3.01	*3.07	*3.12	*3.15	*3.22
	Not Retained	2.88	2.88	3.06	2.99	3.12
First-Year GPA	Retained	*3.14	*3.20	*3.22	*3.30	*3.33
	Not Retained	2.28	2.13	2.35	2.63	2.91

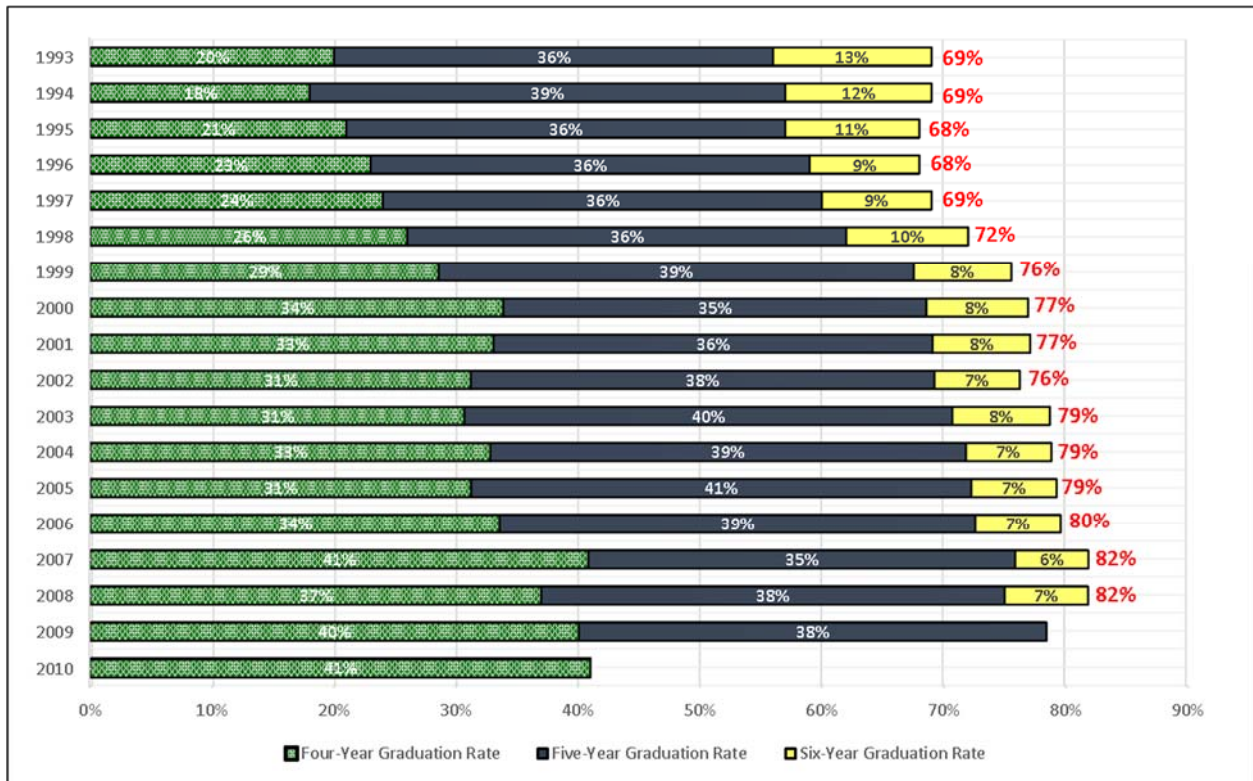
\* Significant difference ( $p \leq 0.05$ )

- Retention beyond the second year was examined by gender, ethnicity, and college of entry.
  - Significant differences were most frequently observed by gender. Females were consistently retained at higher levels for all cohorts examined. These differences were most frequently observed in retention years four, five, and six and least in year two (see Table 5).
  - The highest second-year retention rate for males (95.6%) occurred in 2013. The highest second-year retention rate for females (97.1%) occurred in 2012. The 2013 cohort recorded the highest second-year retention rate overall.
  - Since 2009, there have been significant differences based on ethnicity consistently each year. Except for the second-year retention for the 2010 cohort, all retention years since 2009 have shown significant differences based on ethnicity (Table 6).
  - Few significant differences were observed by college of entry. The second-year retention for the 2013 cohort did show college of entry as significant, the first since 2007 (Table 7).

### Graduation Highlights

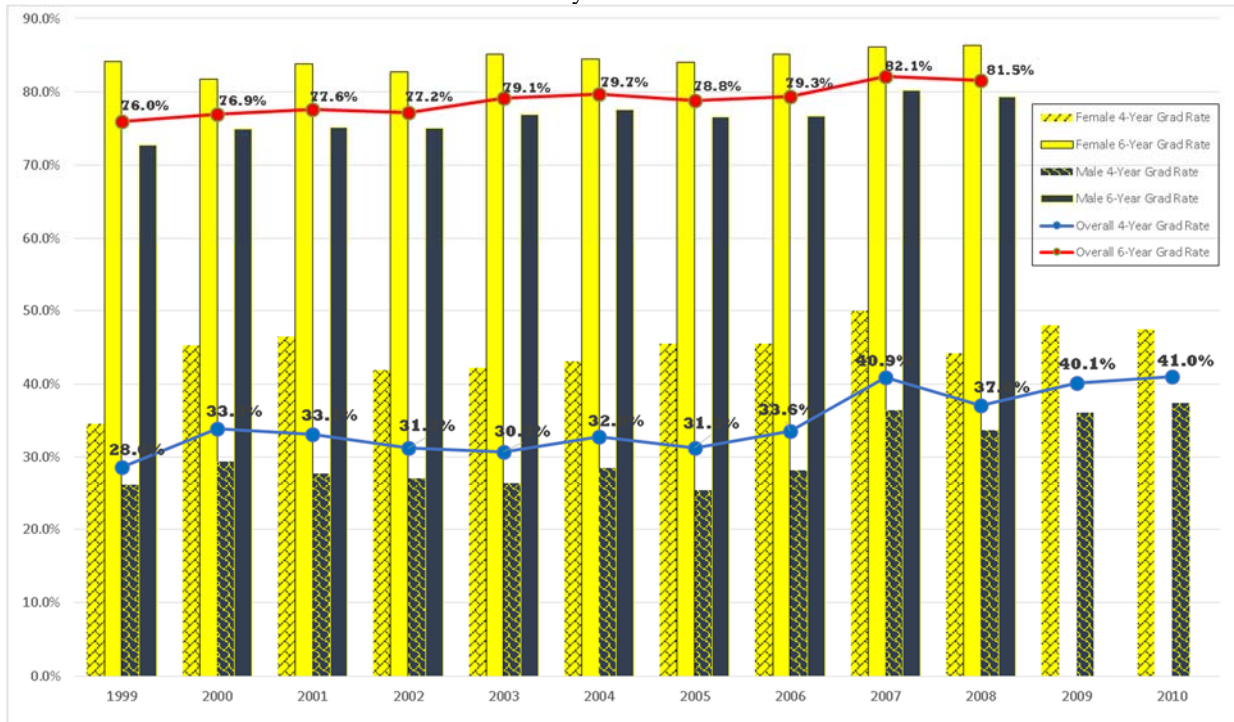
The four-year graduation rate for the 2010 cohort reached a notable rate of 41%, a rate that has not been accomplished since the 2007 cohort group (Table 4). As with the four-year graduation rate, the 2009 cohort's fifth-year graduation rate rose to the historic rate of 78%. The six-year graduation rate remained 82% for the 2008 cohort.

Chart 3. Freshman Cohort Graduation Rates



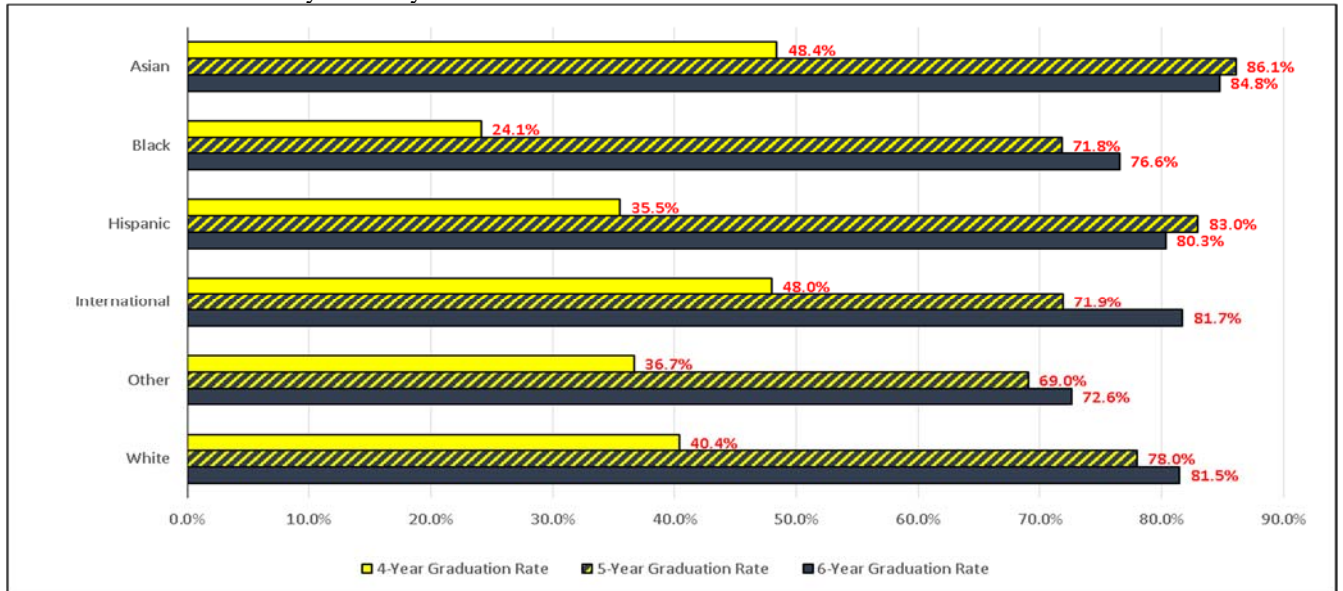
- Significant differences in four-year, five-year and six-year graduation rates were observed for all cohorts in this study for gender, and all cohorts, except 2008, for ethnicity (Tables 9-10).
- Significant differences were most often observed in gender, with females consistently graduating at significantly higher rates than males at four-year, five-year and six-year (Chart 4).
  - Male four-year graduation rates have increased from 29% to 37% over the last ten years. Female four-year graduation rates were at a high of 50% for the 2007 cohort, but fell back to 47% for the 2010 cohort group.
  - The five-year graduation rate reached historic levels for both males (75%) and females (86%) for the 2009 cohort group, which also has the highest overall five-year graduation rate of 78% combined.
  - Females continue to graduate at significantly higher six-year rates for all cohorts studied, with their six-year graduation rate reaching 86.3%, while the male six-year graduation rate showed a minor decrease (79.3%) in the 2008 cohort (Chart 4).

Chart 4. Four-Year and Six-Year Graduation Rates by Gender



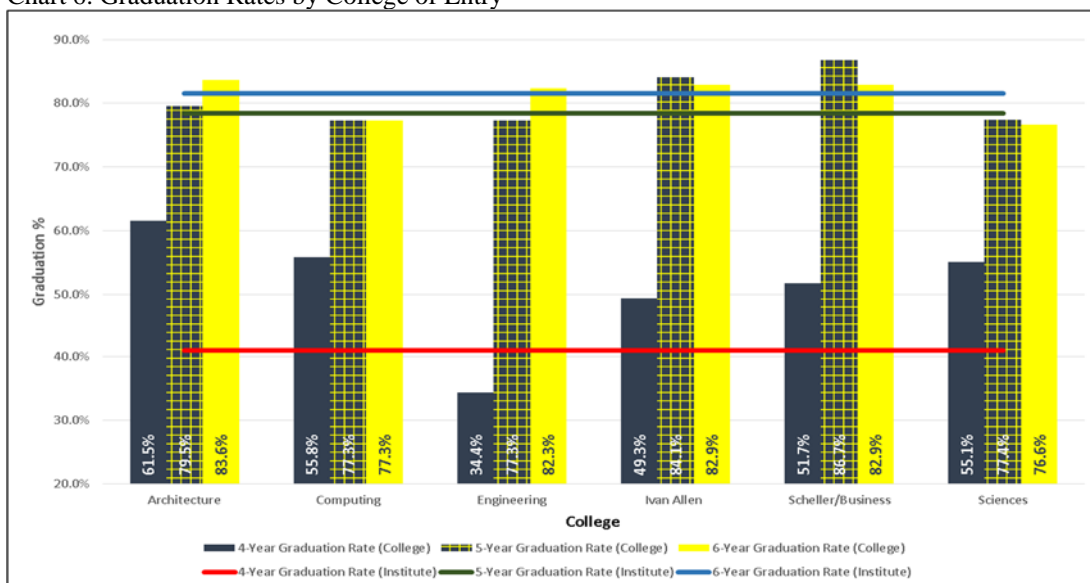
- Significant differences in graduation rates at four, five and six-years were observed in all years based on ethnicity, with Asian and International students consistently graduating at higher rates (when the small numbers of American Indian, Native Hawaiian, Two or More races, and Unknown Race/Ethnicity students were excluded), while Black/African-American students consistently graduate at lower rates.
  - After a historic four-year graduation rate in 2008 for Black/African-American students (34.4%), the rate fell to 24.1% for the 2010 cohort, the lowest since the 2006 cohort.
  - In 2009, the five-year graduation rate for the Hispanic or Latino cohort rose another 9.5% to 83% over the previous five-year graduation rate (73.5%). This historic rate for Hispanic or Latino students was second only to Asian students who showed a five-year graduation rate of 86.1%, up 8.2% over the previous 2008 cohort group.
  - After consistently having one of the highest five-year graduation rates, International student’s five-year graduation rate for the last 3 years has decreased 7.4% since 2006. We will continue to watch this group of students in subsequent years to see if this trend continues. Black/African-American students consistently graduated at lower five-year rates, but the gap between the institutional rate (78.4%) and the Black/African American rate (71.8%) rose to 6.6% for the most recent 2009 cohort, due to the institute rate growing faster than the Black/African American rate. The Black/African American rate has consistently trended higher since 2005.
  - The six-year graduation rates for Asian, International and White students were at or above the overall rate of 81.5% for the 2008 cohort. These three ethnicities make up 88% of the student population of the 2008 cohort group. The most recent six-year (80.3%) graduation rates for Hispanic students increased 7.6% from the lowest observed in 2007 (72.7%), bringing the group closer to the six-year institutional average of 81.5%. The six-year graduation rate for Black/African American students reached a historic high of 76.6% for the 2008 cohort (Table 10).

Chart 5. Graduation Rates by Ethnicity



- Significant differences were observed less frequently by college of entry for six-year graduation rates as compared to four- and five-year graduation rates.
  - Students entering the College of Architecture, the College of Sciences and the College of Computing in the 2010 cohort graduated at higher four-year rates, while over time, the Ivan Allen College have been more consistent in higher four-year graduation rates. Entrants to the College of Engineering most frequently graduated at lower four-year rates.
  - In the previous four cohorts, there have not been statistical differences in five-year graduation rates by college of entry, however this changed for the 2009 cohort group. Entrants in the College of Computing most frequently graduated in five-years at lower rates for the earliest cohorts. College of Architecture most frequently graduated in five-years at higher rates for the earliest cohorts; higher rates in the College of Business and the Ivan Allen College were observed for more recent cohorts.
  - College of entry was significant for only one (2004) out of the nine cohorts examined (Table 11) for six-year graduation rates. The College of Architecture had the highest six-year graduation rate in 2008 (83.6%), while the College of Sciences had the lowest (76.6%).

Chart 6. Graduation Rates by College of Entry





## Pell Status

Retention and graduation rates for students receiving Pell were tracked for the second time in this study. For the purposes of this study, Pell status includes all students who received Pell in their first cohort year at Georgia Tech.

- Retention percentages of those receiving Pell were very similar to those not receiving Pell. The Chi-square test was conducted on cohorts 2006 to 2013.
  - Significant differences were observed in Pell status in all cohort groups except 2008.
  - Second year retention was higher for those who did not receive Pell in most cohort groups, with the exception of 2007. The trend continues for most other retention years as well.
  - Overall, retention rates for those who receive Pell are lower than the retention rates for the total cohort group for all cohort groups in this study.
- Pell status had a greater effect on graduation. Without exception, those with no Pell graduated in the 4<sup>th</sup>, 5<sup>th</sup> and 6<sup>th</sup> years at a higher rate than those who received Pell.
  - Without exception, Pell recipients graduated at lower four, five and six-year rates than those who did not receive Pell for the cohort groups examined.
  - Significant differences were observed in four-year graduation rates for the 2009 and 2010 cohort groups.
  - Five-year graduation rates have increased for those who received Pell from 2006 (65.1%) to 2009 (71.2%). Significant differences in five-year graduation rates by Pell status were observed in all cohort groups with the exception of 2007.
  - In the cohort groups examined, significant differences in six-year graduation rates were observed in 2006 and 2007.

## Non-Retained Freshmen

In Fall 2008, Georgia Tech's freshman cohort enrolled for classes with 2,633 students beginning their pursuit of a bachelor's degree. Of the 2,633 students in this cohort, 82% graduated within six years by the end of Summer 2013; 2% did not graduate but were still enrolled during Fall 2013; and 16% left Georgia Tech. It should be noted that of the 419 students who left Georgia Tech without their bachelor's degree, 52% had a cumulative GPA of 1.99 or less while 48% had a cumulative GPA of 2.00 or greater.

Chart 7. Status of the 2008 Entering Freshman Cohort (N=2,633)

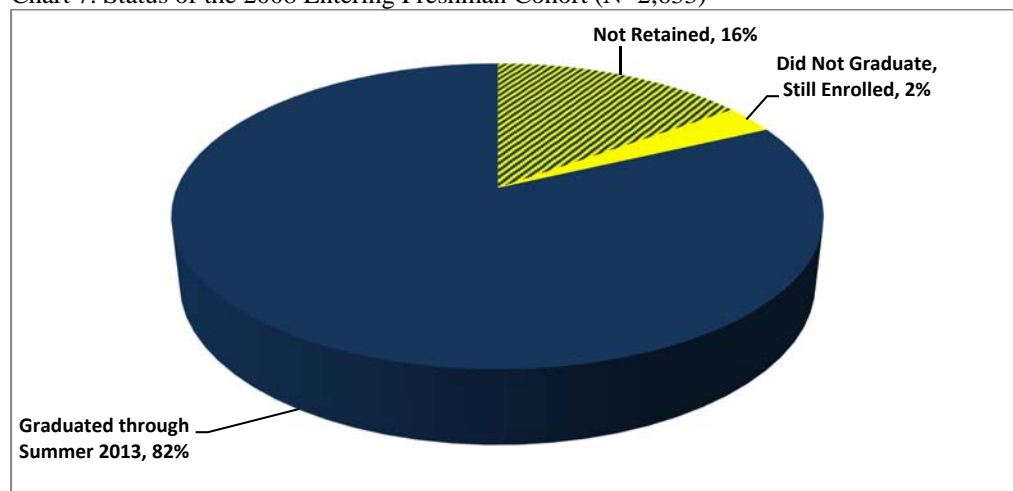
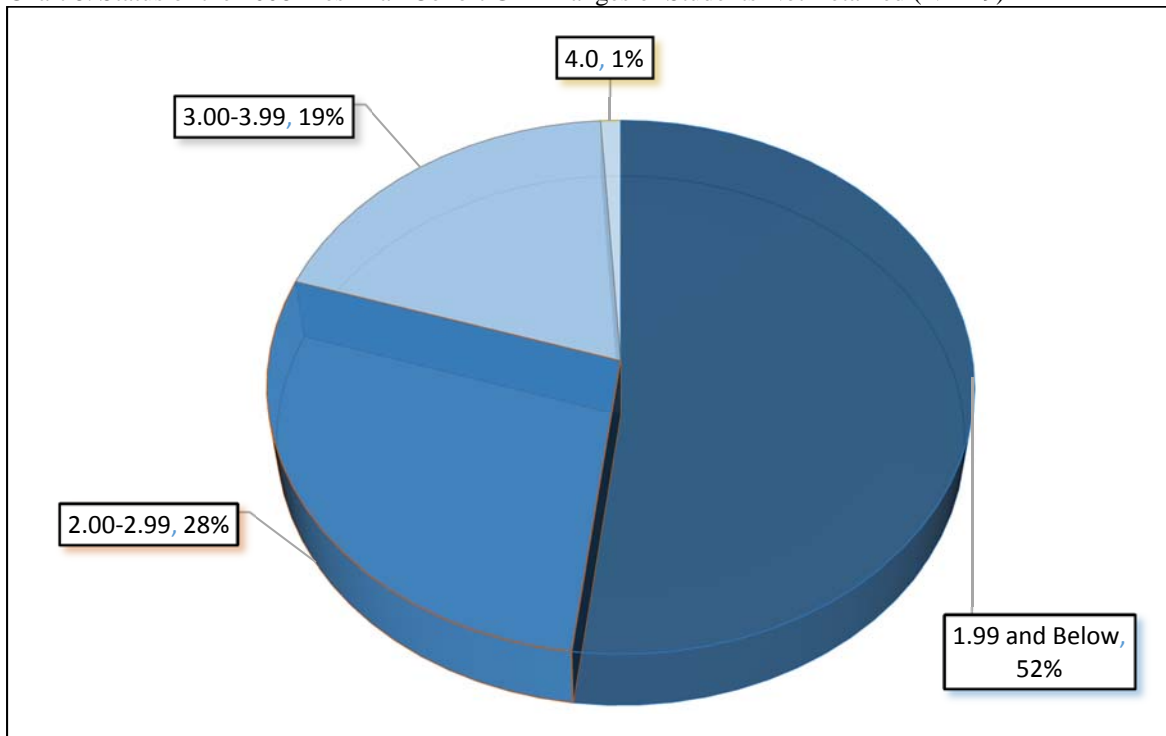


Chart 8. Status of the 2008 Freshman Cohort GPA Ranges of Students Not Retained (N=419)



The group of 200 non-retained students with a cumulative GPA of 2.00 and above represents a tremendous opportunity for Georgia Tech to improve our retention and graduation rates as we can learn from their subsequent enrollment at other institutions of higher education. Using data from the National Student Clearinghouse, we analyzed the 419 students who were not retained from the Fall 2008 freshman class, including the 200 who had a cumulative GPA of at least a 2.00 and could have succeeded at Georgia Tech. Our findings are as follows:

- A total of 175 total degrees, including seven Master's degrees, were awarded to 150 former Georgia Tech students with 78% earning bachelor's degrees; 18% earning associate's degrees and 4% earning unspecified degrees. Within this group of degree recipients, 96 (64%) had a cumulative GPA of 2.00 or greater while they were enrolled at Georgia Tech.
- These 96 students earned 99 undergraduate degrees with 92 bachelor's (93%) and 7 associate's/certificates (7%). Five master's degrees were also earned by these students.
- Sixty-eight bachelor's degrees were awarded in disciplines available at Georgia Tech (74%) while the remaining 24 were awarded in disciplines not found at Georgia Tech (26%). The degrees awarded to this group that were most often available at Georgia Tech included Business Administration/Management, Biology, Computer Science and Economics. A total of 18 engineering bachelor's degrees were awarded outside of Georgia Tech including Mechanical, Biomedical, Chemical, Civil, Computer, and Industrial Engineering and it is interesting to note that all of these degrees were awarded by institutions outside of Georgia.
- 67% of the students returned to their home state while 33% went outside of their home state to pursue their undergraduate degrees. Institutions awarding the most degrees to non-retained Georgia Tech students with a 2.00 GPA or greater include Georgia State University, University of Georgia, University of Maryland, University of North Carolina-Chapel Hill and Emory University.
- If Georgia Tech had retained and graduated the 68 bachelor's recipients who received their degrees elsewhere even though the discipline was available at Georgia Tech, the six-year graduation rate for Georgia Tech would be 84% for the 2008 freshman cohort.

## Appendix

Table 3. Retention Rates Overall

Freshman Cohort		Retention Rates (to next Fall term)					
Year	n	2nd Yr	3rd Yr	4th Yr	5th Yr	6th Yr	7th Yr
1993	1955	85%	78%	74%	72%	72%	71%
1994	2012	85%	78%	73%	73%	72%	73%
1995	2120	85%	76%	73%	71%	71%	71%
1996	2120	85%	77%	73%	72%	72%	72%
1997	2069	86%	79%	75%	75%	74%	74%
1998	2487	86%	80%	77%	75%	75%	75%
1999	2298	90%	83%	81%	80%	79%	79%
2000	2243	90%	84%	81%	80%	79%	79%
2001	2225	91%	84%	82%	81%	80%	80%
2002	2277	90%	84%	82%	80%	80%	80%
2003	2225	92%	86%	84%	82%	82%	82%
2004	2575	92%	86%	84%	82%	82%	83%
2005	2419	93%	87%	84%	82%	82%	82%
2006	2838	92%	87%	84%	83%	82%	82%
2007	2624	93%	88%	87%	85%	85%	85%
2008	2633	93%	88%	86%	85%	84%	84%
2009	2655	94%	90%	88%	87%	88%	
2010	2706	95%	92%	90%	89%		
2011	2692	95%	91%	89%			
2012	3039	96%	92%				
2013	2669	96%					

Table 4. Graduation Rates Overall

Freshman Cohort		Graduation Rates (through Summer Term)		
Year	n	4 Yrs	5 Yrs	6 Yrs
1993	1955	20%	56%	69%
1994	2012	18%	57%	69%
1995	2120	21%	57%	68%
1996	2120	23%	59%	68%
1997	2069	24%	60%	69%
1998	2087	26%	62%	72%
1999	2298	29%	68%	76%
2000	2243	34%	69%	77%
2001	2225	33%	69%	78%
2002	2277	31%	70%	77%
2003	2225	31%	71%	79%
2004	2575	33%	72%	80%
2005	2419	31%	72%	79%
2006	2838	34%	72%	79%
2007	2624	41%	76%	82%
2008	2633	37%	75%	82%
2009	2655	40%	78%	
2010	2706	41%		

Table 5. Retention Rates by Gender

Freshman Cohort				Retention Rates (to next Fall term)					
Year	Gender	n	%	2nd Yr	3rd Yr	4th Yr	5th Yr	6th Yr	7th Yr
2003	<b>Total</b>	<b>2225</b>		<b>*92.1%</b>	<b>*85.9%</b>	<b>*83.9%</b>	<b>*82.4%</b>	<b>*81.7%</b>	<b>*81.9%</b>
	Female	607	27.3%	94.6%	89.5%	86.3%	86.7%	86.3%	86.7%
	Male	1618	72.7%	91.2%	84.5%	82.9%	80.8%	80.0%	80.1%
2004	<b>Total</b>	<b>2575</b>		<b>*91.8%</b>	<b>*86.5%</b>	<b>*84.4%</b>	<b>*82.5%</b>	<b>*82.0%</b>	<b>*82.7%</b>
	Female	768	29.8%	94.4%	89.3%	*88.5%	86.8%	86.8%	87.1%
	Male	1807	70.2%	90.7%	85.3%	82.7%	80.7%	79.9%	80.8%
2005	<b>Total</b>	<b>2419</b>		<b>*92.5%</b>	<b>*86.9%</b>	<b>*84.1%</b>	<b>*82.4%</b>	<b>*81.7%</b>	<b>*81.9%</b>
	Female	714	29.5%	94.4%	89.4%	86.8%	87.0%	85.0%	85.4%
	Male	1705	70.5%	91.8%	85.9%	83.0%	80.4%	80.3%	80.5%
2006	<b>Total</b>	<b>2838</b>		<b>*92.4%</b>	<b>*86.6%</b>	<b>*84.2%</b>	<b>*82.9%</b>	<b>*81.6%</b>	<b>81.90%</b>
	Female	890	31.4%	94.7%	90.1%	88.5%	87.6%	86.9%	86.7%
	Male	1948	68.6%	91.4%	85.0%	82.2%	80.7%	79.3%	79.7%
2007	<b>Total</b>	<b>2624</b>		<b>93%</b>	<b>88.40%</b>	<b>*87.1%</b>	<b>*84.6%</b>	<b>*84.6%</b>	<b>*84.8%</b>
	Female	854	32.5%	94.4%	89.9%	89.0%	86.9%	87.0%	87.0%
	Male	1770	67.5%	92.9%	87.7%	86.1%	83.5%	83.5%	83.7%
2008	<b>Total</b>	<b>2633</b>		<b>*93.0%</b>	<b>*87.8%</b>	<b>*85.9%</b>	<b>*84.8%</b>	<b>*84.3%</b>	<b>*84.1%</b>
	Female	838	31.8%	94.9%	90.1%	89.0%	88.1%	87.6%	87.2%
	Male	1795	68.2%	92.1%	86.7%	84.5%	83.3%	82.7%	82.6%
2009	<b>Total</b>	<b>2655</b>		<b>94.2%</b>	<b>*89.6%</b>	<b>*88.2%</b>	<b>*87.3%</b>	<b>*87.5%</b>	
	Female	887	33.4%	94.9%	92.8%	91.4%	90.6%	90.8%	
	Male	1768	66.6%	93.9%	88.1%	86.6%	85.6%	85.9%	
2010	<b>Total</b>	<b>2706</b>		<b>94.9%</b>	<b>*91.5%</b>	<b>*89.8%</b>	<b>*88.6%</b>		
	Female	976	36.1%	95.9%	93.8%	91.9%	91.4%		
	Male	1730	63.9%	94.3%	90.2%	88.6%	87.0%		
2011	<b>Total</b>	<b>2692</b>		<b>94.9%</b>	<b>*90.7%</b>	<b>*88.5%</b>			
	Female	1015	37.7%	95.2%	92.5%	90.4%			
	Male	1677	62.3%	94.7%	89.7%	87.3%			
2012	<b>Total</b>	<b>3039</b>		<b>*95.5%</b>	<b>*91.5%</b>				
	Female	1061	34.9%	97.1%	93.5%				
	Male	1978	65.1%	94.7%	90.4%				
2013	<b>Total</b>	<b>2669</b>		<b>96.0%</b>					
	Female	996	37.3%	96.8%					
	Male	1673	62.7%	95.6%					

\* Significant difference ( $p \leq 0.05$ )

Table 6. Retention Rates by Ethnicity

Year	Freshman Cohort		Retention Rates (to next Fall term)						
	Ethnicity	n	%	2nd Yr	3rd Yr	4th Yr	5th Yr	6th Yr	7th Yr
2003	<b>Total</b>	<b>2225</b>		<b>92.1%</b>	<b>85.9%</b>	<b>83.9%</b>	<b>*82.4%</b>	<b>*81.7%</b>	<b>*81.9%</b>
	Asian	317	14.2%	92.7%	86.4%	81.4%	82.6%	80.1%	80.4%
	Black or African American	118	5.3%	94.1%	84.7%	83.9%	72.0%	72.9%	72.9%
	Hispanic or Latino	62	2.8%	100.0%	91.9%	91.9%	87.1%	85.5%	83.9%
	International	107	4.8%	95.3%	93.5%	91.6%	86.9%	87.9%	88.8%
	Other <sup>1</sup>	44	2.0%	95.5%	88.6%	77.3%	79.5%	81.8%	81.8%
White	1577	70.9%	91.2%	85.0%	83.7%	82.7%	82.1%	82.3%	
2004	<b>Total</b>	<b>2575</b>		<b>*91.8%</b>	<b>*86.5%</b>	<b>*84.4%</b>	<b>82.5%</b>	<b>82.0%</b>	<b>82.7%</b>
	Asian	379	14.7%	94.2%	90.5%	87.1%	85.0%	83.4%	83.6%
	Black or African American	145	5.6%	93.8%	86.9%	83.4%	79.3%	75.9%	76.6%
	Hispanic or Latino	104	4.0%	94.2%	90.4%	87.5%	84.6%	84.6%	85.6%
	International	103	4.0%	96.1%	95.1%	94.1%	91.2%	89.2%	91.2%
	Other <sup>1</sup>	56	2.2%	91.1%	85.7%	87.5%	85.7%	89.3%	87.5%
White	1788	69.4%	90.8%	84.9%	83.1%	81.5%	81.4%	82.2%	
2005	<b>Total</b>	<b>2419</b>		<b>*92.5%</b>	<b>*86.9%</b>	<b>*84.1%</b>	<b>*82.4%</b>	<b>*81.7%</b>	<b>*81.9%</b>
	Asian	313	12.9%	95.5%	89.5%	87.2%	85.9%	85.3%	85.6%
	Black or African American	143	5.9%	93.7%	84.6%	76.2%	69.9%	63.6%	63.6%
	Hispanic or Latino	110	4.5%	93.6%	91.7%	88.1%	84.4%	83.5%	82.6%
	International	73	3.0%	94.5%	87.7%	82.2%	84.9%	86.3%	83.6%
	Other <sup>1</sup>	79	3.3%	97.5%	96.2%	93.7%	88.6%	88.6%	88.6%
White	1701	70.3%	91.5%	85.9%	83.6%	82.2%	81.9%	82.4%	
2006	<b>Total</b>	<b>2838</b>		<b>92.4%</b>	<b>86.6%</b>	<b>84.2%</b>	<b>*82.9%</b>	<b>*81.6%</b>	<b>*81.9%</b>
	Asian	442	15.6%	93.2%	89.1%	87.3%	88.0%	85.3%	85.3%
	Black or African American	151	5.3%	89.4%	82.1%	78.8%	70.9%	72.2%	71.5%
	Hispanic or Latino	133	4.7%	94.7%	85.0%	82.0%	82.7%	78.9%	79.7%
	International	111	3.9%	91.9%	90.1%	85.6%	86.5%	85.6%	84.7%
	Other <sup>1</sup>	89	3.1%	93.3%	88.8%	87.6%	88.8%	84.3%	86.5%
White	1912	67.4%	92.3%	86.2%	83.8%	82.2%	81.4%	81.7%	
2007	<b>Total</b>	<b>2624</b>		<b>93.4%</b>	<b>88.4%</b>	<b>87.1%</b>	<b>84.6%</b>	<b>84.6%</b>	<b>*84.8%</b>
	Asian	435	16.6%	94.7%	90.8%	90.3%	85.5%	87.3%	86.9%
	Black or African American	117	4.5%	94.0%	88.9%	84.6%	76.9%	80.3%	77.8%
	Hispanic or Latino	132	5.0%	92.4%	86.3%	84.7%	80.2%	77.9%	76.3%
	International	160	6.1%	93.7%	89.3%	86.8%	85.5%	84.9%	88.7%
	Other <sup>1</sup>	78	3.0%	94.8%	90.9%	85.7%	83.1%	80.5%	81.8%
White	1702	64.9%	92.9%	87.8%	86.7%	85.2%	84.9%	85.2%	
2008	<b>Total</b>	<b>2633</b>		<b>93.0%</b>	<b>87.8%</b>	<b>85.9%</b>	<b>84.8%</b>	<b>84.3%</b>	<b>84.1%</b>
	Asian	466	17.7%	95.3%	91.0%	88.2%	87.6%	86.7%	86.7%
	Black or African American	128	4.9%	91.4%	88.3%	88.3%	84.4%	78.9%	78.9%
	Hispanic or Latino	117	4.4%	90.6%	87.2%	82.9%	84.6%	83.8%	83.8%
	International	175	6.6%	92.6%	82.3%	83.4%	85.1%	87.4%	89.1%
	Other <sup>1</sup>	73	2.8%	87.7%	80.8%	79.5%	76.7%	75.3%	75.3%
White	1674	63.6%	92.9%	87.8%	85.9%	84.5%	84.1%	83.6%	
2009	<b>Total</b>	<b>2655</b>		<b>*94.2%</b>	<b>*89.6%</b>	<b>*88.2%</b>	<b>*87.3%</b>	<b>*87.5%</b>	
	Asian	496	18.7%	96.6%	94.8%	94.2%	91.3%	93.1%	
	Black or African American	117	4.4%	94.9%	90.6%	87.2%	83.8%	83.8%	
	Hispanic or Latino	94	3.5%	93.6%	87.2%	84.0%	87.2%	85.1%	
	International	306	11.5%	88.9%	81.0%	82.6%	85.2%	87.5%	
	Other <sup>1</sup>	84	3.2%	92.9%	89.3%	88.1%	83.3%	84.5%	
White	1558	58.7%	94.6%	89.8%	87.7%	86.8%	86.3%		
2010	<b>Total</b>	<b>2706</b>		<b>94.9%</b>	<b>*91.5%</b>	<b>*89.8%</b>	<b>*88.6%</b>		
	Asian	440	16.3%	95.7%	93.2%	92.5%	90.9%		
	Black or African American	145	5.4%	92.4%	93.8%	89.0%	85.5%		
	Hispanic or Latino	166	6.1%	95.2%	94.0%	91.6%	91.6%		
	International	221	8.2%	91.4%	83.3%	83.3%	83.7%		
	Other <sup>1</sup>	109	4.0%	92.7%	84.4%	78.9%	78.9%		
White	1625	60.1%	95.4%	92.2%	90.6%	89.2%			
2011	<b>Total</b>	<b>2692</b>		<b>*94.9%</b>	<b>*90.7%</b>	<b>*88.5%</b>			
	Asian	444	16.5%	97.3%	93.7%	92.3%			
	Black or African American	166	6.2%	93.4%	86.7%	80.0%			
	Hispanic or Latino	159	5.9%	95.6%	93.7%	89.9%			
	International	237	8.8%	91.6%	83.1%	83.5%			
	Other <sup>1</sup>	110	4.1%	92.7%	90.9%	84.5%			
White	1576	58.5%	94.9%	91.2%	89.2%				
2012	<b>Total</b>	<b>3039</b>		<b>*95.5%</b>	<b>*91.5%</b>				
	Asian	537	17.7%	98.7%	94.0%				
	Black or African American	156	5.1%	92.3%	85.9%				
	Hispanic or Latino	205	6.7%	96.6%	92.7%				
	International	419	13.8%	93.8%	87.1%				
	Other <sup>1</sup>	131	4.3%	96.9%	92.4%				
White	1591	52.4%	95.0%	92.1%					
2013	<b>Total</b>	<b>2669</b>		<b>*96.0%</b>					
	Asian	510	19.1%	97.8%					
	Black or African American	157	5.9%	93.0%					
	Hispanic or Latino	135	5.1%	94.8%					
	International	318	11.9%	91.2%					
	Other <sup>1</sup>	119	4.5%	95.8%					
White	1430	53.6%	96.9%						

\* Significant difference ( $p \leq 0.05$ ), when Other category is excluded.<sup>1</sup> Other includes: American Indian or Alaskan Native, Native Hawaiian or Other Pacific Islander, Unknown and Two or More Races<sup>2</sup> Ethnicity categories combined when populations totaled less than five.

Table 7. Retention Rates by College

Cohort Freshman				Retention Rates (to next Fall term)					
Year	Entering College	n	%	2nd Yr	3rd Yr	4th Yr	5th Yr	6th Yr	7th Yr
2003	<b>Total</b>	<b>2225</b>		<b>92.1%</b>	<b>85.9%</b>	<b>83.9%</b>	<b>82.4%</b>	<b>81.7%</b>	<b>81.9%</b>
	Architecture	125	5.6%	93.6%	90.4%	87.2%	88.0%	88.0%	87.2%
	Computing	193	8.7%	94.8%	87.0%	82.4%	77.2%	78.8%	78.8%
	Engineering	1441	64.8%	91.6%	85.0%	83.9%	82.7%	81.6%	81.7%
	Ivan Allen	112	5.0%	91.1%	87.5%	83.9%	84.8%	85.7%	85.7%
	Scheller/Business	124	5.6%	93.5%	90.3%	85.5%	83.1%	79.0%	80.6%
	Sciences	230	10.3%	92.1%	84.7%	82.1%	80.8%	80.8%	81.7%
2004	<b>Total</b>	<b>2575</b>		<b>*91.8%</b>	<b>*86.5%</b>	<b>*84.4%</b>	<b>*82.5%</b>	<b>*82.0%</b>	<b>*82.7%</b>
	Architecture	178	6.9%	88.8%	80.3%	78.1%	75.8%	76.4%	77.0%
	Computing	185	7.2%	87.5%	81.5%	79.9%	78.8%	78.3%	78.8%
	Engineering	1658	64.4%	91.8%	86.5%	84.4%	82.8%	82.0%	82.7%
	Ivan Allen	121	4.7%	92.6%	89.3%	85.1%	81.0%	81.0%	81.8%
	Scheller/Business	157	6.1%	94.3%	93.0%	89.8%	86.0%	87.3%	89.2%
	Sciences	276	10.7%	95.3%	88.7%	88.3%	86.1%	85.4%	85.8%
2005	<b>Total</b>	<b>2419</b>		<b>92.5%</b>	<b>86.9%</b>	<b>84.1%</b>	<b>82.4%</b>	<b>81.7%</b>	<b>81.9%</b>
	Architecture	145	6.0%	89.0%	88.3%	84.8%	84.1%	80.7%	82.1%
	Computing	158	6.5%	90.5%	83.5%	82.3%	77.8%	77.2%	75.9%
	Engineering	1524	63.0%	92.8%	87.1%	84.2%	82.4%	82.2%	82.4%
	Ivan Allen	173	7.2%	97.1%	88.4%	87.3%	85.0%	85.5%	86.1%
	Scheller/Business	163	6.7%	91.4%	87.7%	80.9%	84.6%	80.9%	80.2%
	Sciences	256	10.6%	91.8%	85.5%	84.0%	80.9%	80.1%	81.3%
2006	<b>Total</b>	<b>2838</b>		<b>92.4%</b>	<b>86.6%</b>	<b>84.2%</b>	<b>82.9%</b>	<b>81.6%</b>	<b>81.9%</b>
	Architecture	174	6.1%	94.8%	88.5%	88.5%	86.2%	85.1%	85.1%
	Computing	231	8.1%	92.6%	84.4%	83.1%	79.2%	78.4%	79.2%
	Engineering	1760	62.0%	93.1%	87.3%	84.5%	83.6%	82.1%	82.3%
	Ivan Allen	184	6.5%	91.8%	86.4%	85.9%	84.8%	82.1%	82.6%
	Scheller/Business	171	6.0%	90.6%	85.4%	82.5%	80.7%	82.5%	83.0%
	Sciences	318	11.2%	88.7%	84.3%	80.8%	79.6%	78.6%	78.6%
2007	<b>Total</b>	<b>2624</b>		<b>93.4%</b>	<b>*88.4%</b>	<b>87.1%</b>	<b>*84.6%</b>	<b>*84.6%</b>	<b>*84.7%</b>
	Architecture	144	5.5%	89.6%	86.8%	86.1%	85.4%	84.0%	83.3%
	Computing	164	6.3%	93.9%	89.6%	87.8%	81.1%	81.7%	82.3%
	Engineering	1660	63.3%	93.5%	88.6%	87.8%	85.7%	85.1%	84.9%
	Ivan Allen	169	6.4%	92.9%	82.2%	79.9%	76.9%	76.9%	78.1%
	Scheller/Business	198	7.5%	97.5%	95.5%	89.9%	87.9%	89.4%	90.4%
	Sciences	289	11.0%	91.3%	86.5%	85.1%	82.4%	85.1%	85.1%
2008	<b>Total</b>	<b>2633</b>		<b>93.0%</b>	<b>87.8%</b>	<b>85.9%</b>	<b>84.8%</b>	<b>84.3%</b>	<b>84.1%</b>
	Architecture	128	4.9%	93.0%	86.7%	86.7%	84.4%	85.2%	85.9%
	Computing	172	6.5%	93.6%	85.5%	84.3%	82.6%	82.0%	78.5%
	Engineering	1686	64.0%	93.2%	88.6%	86.7%	85.9%	85.1%	85.2%
	Ivan Allen	199	7.6%	93.5%	85.4%	83.9%	83.4%	84.4%	83.9%
	Scheller/Business	170	6.5%	92.9%	87.1%	85.3%	83.5%	82.4%	83.5%
	Sciences	278	10.6%	90.6%	86.7%	84.2%	82.0%	81.7%	80.2%
2009	<b>Total</b>	<b>2655</b>		<b>94.2%</b>	<b>89.6%</b>	<b>88.2%</b>	<b>87.3%</b>	<b>87.5%</b>	
	Architecture	122	4.6%	92.6%	86.9%	86.1%	82.0%	85.2%	
	Computing	163	6.1%	94.5%	86.5%	87.7%	84.0%	84.0%	
	Engineering	1760	66.3%	94.4%	89.8%	88.8%	87.8%	88.2%	
	Ivan Allen	157	5.9%	91.7%	88.5%	87.9%	89.2%	88.5%	
	Scheller/Business	166	6.3%	96.4%	93.4%	91.0%	88.6%	89.8%	
	Sciences	287	10.8%	93.7%	89.9%	84.3%	86.1%	84.3%	
2010	<b>Total</b>	<b>2706</b>		<b>94.9%</b>	<b>91.5%</b>	<b>89.8%</b>	<b>88.6%</b>		
	Architecture	91	3.4%	95.6%	92.3%	91.2%	90.1%		
	Computing	172	6.4%	94.8%	91.3%	87.2%	87.8%		
	Engineering	1799	66.5%	95.1%	91.7%	90.4%	88.9%		
	Ivan Allen	150	5.5%	96.0%	90.0%	87.3%	87.3%		
	Scheller/Business	178	6.6%	93.8%	92.1%	88.2%	86.5%		
	Sciences	316	11.7%	93.4%	90.5%	89.2%	88.3%		
2011	<b>Total</b>	<b>2692</b>		<b>94.9%</b>	<b>90.7%</b>	<b>88.5%</b>			
	Architecture	92	3.4%	93.5%	91.3%	90.2%			
	Computing	172	6.4%	94.8%	91.8%	88.3%			
	Engineering	1832	68.1%	95.0%	91.0%	88.7%			
	Ivan Allen	127	4.7%	94.5%	90.6%	89.8%			
	Scheller/Business	170	6.3%	97.1%	91.2%	90.0%			
	Sciences	299	11.1%	93.0%	88.3%	85.6%			
2012	<b>Total</b>	<b>3039</b>		<b>95.5%</b>	<b>91.5%</b>				
	Architecture	62	2.0%	96.8%	91.9%				
	Computing	243	8.0%	95.9%	90.5%				
	Engineering	2177	71.6%	96.0%	92.1%				
	Ivan Allen	127	4.2%	92.9%	88.2%				
	Scheller/Business	171	5.6%	93.0%	90.1%				
	Sciences	259	8.5%	94.2%	89.6%				
2013	<b>Total</b>	<b>2669</b>		<b>*96.0%</b>					
	Architecture	42	1.6%	92.9%					
	Computing	245	9.2%	96.3%					
	Engineering	1921	72.0%	96.5%					
	Ivan Allen	85	3.2%	90.6%					
	Scheller/Business	169	6.3%	92.9%					
	Sciences	207	7.8%	97.1%					

\*Significant difference ( $p \leq 0.05$ )

Table 8. Retention by Pell Status

Freshman Cohort				Retention Rates (to next Fall term)					
Year	Pell	n	%	2nd Yr	3rd Yr	4th Yr	5th Yr	6th Yr	7th Yr
2006	<b>Total</b>	<b>2838</b>		<b>*92.4%</b>	<b>86.6%</b>	<b>*84.2%</b>	<b>*82.9%</b>	<b>*81.6%</b>	<b>*81.9%</b>
	Pell	321	11.3%	89.1%	83.8%	79.4%	76.9%	74.8%	76.9%
	No Pell	2517	88.7%	92.8%	86.9%	84.8%	83.6%	82.4%	82.4%
2007	<b>Total</b>	<b>2624</b>		<b>93.4%</b>	<b>88.4%</b>	<b>87.1%</b>	<b>*84.6%</b>	<b>84.6%</b>	<b>84.8%</b>
	Pell	298	11.4%	94.0%	84.9%	83.6%	80.2%	81.2%	82.6%
	No Pell	2326	88.6%	93.1%	88.7%	87.3%	85.0%	84.9%	84.9%
2008	<b>Total</b>	<b>2633</b>		<b>93.0%</b>	<b>87.8%</b>	<b>85.9%</b>	<b>84.8%</b>	<b>84.3%</b>	<b>84.1%</b>
	Pell	271	10.3%	91.9%	86.7%	85.6%	83.0%	81.2%	81.2%
	No Pell	2362	89.7%	93.1%	87.9%	86.0%	85.1%	84.6%	84.4%
2009	<b>Total</b>	<b>2655</b>		<b>*94.2%</b>	<b>89.6%</b>	<b>88.2%</b>	<b>*87.3%</b>	<b>*87.5%</b>	
	Pell	378	14.2%	91.0%	88.6%	86.0%	82.0%	83.3%	
	No Pell	2277	85.8%	94.7%	89.7%	88.5%	88.1%	88.2%	
2010	<b>Total</b>	<b>2706</b>		<b>*94.9%</b>	<b>91.5%</b>	<b>*89.8%</b>	<b>88.6%</b>		
	Pell	457	16.9%	92.6%	90.8%	86.7%	86.0%		
	No Pell	2249	83.1%	95.3%	91.6%	90.4%	89.1%		
2011	<b>Total</b>	<b>2692</b>		<b>94.9%</b>	<b>90.7%</b>	<b>88.5%</b>			
	Pell	458	17.0%	94.8%	89.5%	86.0%			
	No Pell	2234	83.0%	94.9%	91.0%	88.9%			
2012	<b>Total</b>	<b>3039</b>		<b>95.5%</b>	<b>*91.5%</b>				
	Pell	436	14.3%	94.5%	89.0%				
	No Pell	2603	85.7%	95.7%	91.9%				
2013	<b>Total</b>	<b>2669</b>		<b>*96.0%</b>					
	Pell	363	13.6%	93.9%					
	No Pell	2306	86.4%	96.4%					

1 Pell Status is defined as a student receiving Pell in their 1<sup>st</sup> cohort year.

Table 9. Graduation Rates by Gender

Freshman Cohort				Graduation Rates (through Summer term)		
Year	Gender	n	%	4 Yrs	5 Yrs	6 Yrs
2000	<b>Total</b>	<b>2243</b>		<b>*33.9%</b>	<b>*68.6%</b>	<b>*76.9%</b>
	Female	641	28.6%	45.2%	76.4%	81.7%
	Male	1602	71.4%	29.3%	65.4%	75.0%
2001	<b>Total</b>	<b>2225</b>		<b>*33.1%</b>	<b>*69.3%</b>	<b>*77.6%</b>
	Female	635	28.5%	46.5%	80.5%	83.8%
	Male	1590	71.5%	27.7%	64.8%	75.2%
2002	<b>Total</b>	<b>2277</b>		<b>*31.2%</b>	<b>*69.7%</b>	<b>*77.2%</b>
	Female	636	27.9%	41.8%	78.9%	82.7%
	Male	1641	72.1%	27.1%	66.1%	75.0%
2003	<b>Total</b>	<b>2225</b>		<b>*30.7%</b>	<b>*70.9%</b>	<b>*79.1%</b>
	Female	607	27.3%	42.2%	80.4%	85.2%
	Male	1618	72.7%	26.4%	67.4%	76.9%
2004	<b>Total</b>	<b>2575</b>		<b>*32.8%</b>	<b>*72.2%</b>	<b>*79.7%</b>
	Female	768	29.8%	43.1%	79.8%	84.5%
	Male	1807	70.2%	28.4%	68.9%	77.6%
2005	<b>Total</b>	<b>2419</b>		<b>*31.3%</b>	<b>*72.3%</b>	<b>*78.8%</b>
	Female	714	29.5%	45.5%	80.0%	84.0%
	Male	1705	70.5%	25.3%	69.0%	76.6%
2006	<b>Total</b>	<b>2838</b>		<b>*33.6%</b>	<b>*72.3%</b>	<b>*79.3%</b>
	Female	890	31.4%	45.5%	81.1%	85.2%
	Male	1948	68.6%	28.1%	68.2%	76.6%
2007	<b>Total</b>	<b>2624</b>		<b>*40.9%</b>	<b>*76.3%</b>	<b>*82.1%</b>
	Female	854	32.5%	50.0%	82.4%	86.1%
	Male	1770	67.5%	36.4%	73.3%	80.2%
2008	<b>Total</b>	<b>2633</b>		<b>*37.0%</b>	<b>*74.7%</b>	<b>*81.5%</b>
	Female	838	31.8%	44.2%	81.9%	86.3%
	Male	1795	68.2%	33.6%	71.4%	79.3%
2009	<b>Total</b>	<b>2655</b>		<b>*40.1%</b>	<b>*78.4%</b>	
	Female	887	33.4%	48.0%	85.9%	
	Male	1768	66.6%	36.1%	74.7%	
2010	<b>Total</b>	<b>2706</b>		<b>*41.0%</b>		
	Female	976	36.1%	47.4%		
	Male	1730	63.9%	37.4%		

\* Significant difference ( $p \leq 0.05$ )

**Table 10. Graduation Rates by Ethnicity**

Freshman Cohort		Graduation Rates (through Summer term)				
Year	Ethnicity	n	%	4 Yrs	5 Yrs	6 Yrs
2000	<b>Total</b>	<b>2243</b>		<b>*33.9%</b>	<b>*68.6%</b>	<b>*76.9%</b>
	Asian	295	13.2%	45.4%	73.6%	80.7%
	Black or African American	124	5.5%	25.0%	55.6%	66.9%
	Hispanic or Latino	63	2.8%	28.6%	73.0%	74.6%
	International	102	4.5%	67.6%	79.4%	84.3%
	Other <sup>1</sup>	29	1.3%	34.5%	69.0%	69.0%
	White	1630	72.7%	30.6%	67.8%	76.7%
2001	<b>Total</b>	<b>2225</b>		<b>*33.1%</b>	<b>*69.3%</b>	<b>*77.6%</b>
	Asian	349	15.7%	44.1%	71.3%	77.7%
	Black or African American	110	4.9%	23.6%	61.8%	68.2%
	Hispanic or Latino	47	2.1%	29.8%	76.6%	85.1%
	International	80	3.6%	63.8%	81.3%	85.0%
	Other <sup>1</sup>	19	0.9%	47.4%	84.2%	89.5%
	White	1620	72.8%	29.8%	68.3%	77.5%
2002	<b>Total</b>	<b>2277</b>		<b>*31.2%</b>	<b>*69.7%</b>	<b>*77.2%</b>
	Asian	317	13.9%	37.9%	75.4%	81.1%
	Black or African American	120	5.3%	17.5%	54.2%	63.3%
	Hispanic or Latino	63	2.8%	39.7%	76.2%	82.5%
	International	92	4.0%	55.4%	77.2%	82.6%
	Other <sup>1</sup>	27	1.2%	18.5%	59.3%	63.0%
	White	1658	72.8%	29.5%	69.2%	77.1%
2003	<b>Total</b>	<b>2225</b>		<b>*30.7%</b>	<b>*70.9%</b>	<b>*79.1%</b>
	Asian	317	14.2%	37.9%	72.2%	77.9%
	Black or African American	118	5.3%	14.4%	56.8%	70.3%
	Hispanic or Latino	62	2.8%	16.1%	72.6%	83.9%
	International	107	4.8%	55.1%	85.0%	86.9%
	Other <sup>1</sup>	44	2.0%	27.3%	65.9%	79.5%
	White	1577	70.9%	29.5%	70.8%	79.3%
2004	<b>Total</b>	<b>2575</b>		<b>*32.8%</b>	<b>*72.2%</b>	<b>*79.7%</b>
	Asian	379	14.7%	36.9%	74.9%	81.5%
	Black or African American	145	5.6%	22.8%	64.1%	74.5%
	Hispanic or Latino	104	4.0%	34.6%	75.0%	83.7%
	International	103	4.0%	47.6%	84.5%	88.3%
	Other <sup>1</sup>	56	2.2%	25.0%	69.6%	80.4%
	White	1788	69.4%	32.0%	71.4%	78.9%
2005	<b>Total</b>	<b>2419</b>		<b>*31.3%</b>	<b>*72.3%</b>	<b>*78.8%</b>
	Asian	313	12.9%	40.9%	77.0%	82.4%
	Black or African American	143	5.9%	14.7%	52.4%	60.8%
	Hispanic or Latino	110	4.5%	30.9%	72.7%	79.1%
	International	73	3.0%	43.8%	74.0%	80.8%
	Other <sup>1</sup>	79	3.3%	29.1%	74.7%	84.8%
	White	1701	70.3%	30.5%	72.8%	79.2%
2006	<b>Total</b>	<b>2838</b>		<b>*33.6%</b>	<b>*72.3%</b>	<b>*79.3%</b>
	Asian	442	15.6%	39.6%	75.3%	83.3%
	Black or African American	151	5.3%	19.2%	60.3%	68.2%
	Hispanic or Latino	133	4.7%	33.8%	71.4%	75.9%
	International	111	3.9%	45.9%	79.3%	82.0%
	Other <sup>1</sup>	89	3.1%	37.1%	69.7%	78.7%
	White	1912	67.4%	32.4%	72.3%	79.4%
2007	<b>Total</b>	<b>2624</b>		<b>*40.9%</b>	<b>*76.3%</b>	<b>*82.1%</b>
	Asian	435	16.6%	46.7%	80.5%	85.5%
	Black or African American	117	4.5%	30.8%	66.7%	75.2%
	Hispanic or Latino	132	5.0%	29.5%	66.7%	72.7%
	International	160	6.1%	47.5%	75.0%	80.6%
	Other <sup>1</sup>	78	3.0%	44.9%	73.1%	79.5%
	White	1702	64.9%	40.1%	76.9%	82.7%
2008	<b>Total</b>	<b>2633</b>		<b>*37.0%</b>	<b>74.7%</b>	<b>81.5%</b>
	Asian	466	17.7%	41.8%	77.9%	84.8%
	Black or African American	128	4.9%	34.4%	70.3%	76.6%
	Hispanic or Latino	117	4.4%	30.8%	73.5%	80.3%
	International	175	6.6%	49.1%	74.3%	81.7%
	Other <sup>1</sup>	73	2.8%	38.4%	67.1%	72.6%
	White	1674	63.6%	34.9%	74.6%	81.5%
2009	<b>Total</b>	<b>2655</b>		<b>*40.1%</b>	<b>*78.4%</b>	
	Asian	496	18.7%	50.2%	86.1%	
	Black or African American	117	4.4%	28.2%	71.8%	
	Hispanic or Latino	94	3.5%	33.0%	83.0%	
	International	306	11.5%	46.4%	71.9%	
	Other <sup>1</sup>	84	3.2%	34.5%	69.0%	
	White	1558	58.7%	37.2%	78.0%	
2010	<b>Total</b>	<b>2706</b>		<b>*41.0%</b>		
	Asian	440	16.3%	48.4%		
	Black or African American	145	5.4%	24.1%		
	Hispanic or Latino	166	6.1%	35.5%		
	International	221	8.2%	48.0%		
	Other <sup>1</sup>	109	4.0%	36.7%		
	White	1625	60.1%	40.4%		

\* Significant difference ( $p \leq 0.05$ ), when Other category is excluded.

<sup>1</sup> Other includes: American Indian or Alaskan Native, Native Hawaiian or Other Pacific Islander, Unknown and Two or More Races

<sup>2</sup> Ethnicity categories combined when populations totaled less than five.



Table 11. Graduation Rates by College

Freshman Cohort				Graduation Rates (through Summer term)		
Year	College	n	%	4 Yrs	5 Yrs	6 Yrs
2000	<b>Total</b>	<b>2243</b>		<b>*33.9%</b>	<b>68.6%</b>	<b>76.9%</b>
	Architecture	117	5.2%	44.4%	75.2%	82.1%
	Computing	377	16.8%	33.4%	66.8%	76.1%
	Engineering	1311	58.4%	29.1%	67.8%	77.2%
	Ivan Allen	99	4.4%	50.5%	74.7%	78.8%
	Scheller/Business	106	4.7%	43.4%	67.0%	71.7%
	Sciences	233	10.4%	44.6%	70.4%	75.5%
2001	<b>Total</b>	<b>2225</b>		<b>*33.1%</b>	<b>*69.3%</b>	<b>77.6%</b>
	Architecture	96	4.3%	46.9%	84.4%	85.4%
	Computing	338	15.2%	34.3%	66.6%	78.1%
	Engineering	1292	58.1%	27.2%	68.0%	77.9%
	Ivan Allen	137	6.2%	54.7%	75.9%	79.6%
	Scheller/Business	137	6.2%	38.7%	68.6%	72.3%
	Sciences	225	10.1%	42.7%	70.2%	73.8%
2002	<b>Total</b>	<b>2277</b>		<b>*31.2%</b>	<b>*69.7%</b>	<b>77.2%</b>
	Architecture	111	4.9%	42.3%	77.5%	79.3%
	Computing	254	11.2%	25.6%	60.6%	75.2%
	Engineering	1432	62.9%	28.0%	70.0%	78.1%
	Ivan Allen	145	6.4%	44.8%	73.8%	77.2%
	Scheller/Business	124	5.4%	36.3%	67.7%	72.6%
	Sciences	211	9.3%	41.7%	72.5%	74.9%
2003	<b>Total</b>	<b>2225</b>		<b>*30.7%</b>	<b>*70.9%</b>	<b>79.1%</b>
	Architecture	125	5.6%	40.8%	81.6%	83.2%
	Computing	193	8.7%	28.5%	65.3%	75.1%
	Engineering	1441	64.8%	25.7%	69.7%	79.5%
	Ivan Allen	112	5.0%	45.5%	77.7%	79.5%
	Scheller/Business	124	5.6%	46.8%	75.0%	78.2%
	Sciences	230	10.3%	42.6%	71.7%	78.3%
2004	<b>Total</b>	<b>2575</b>		<b>*32.8%</b>	<b>*72.2%</b>	<b>*79.7%</b>
	Architecture	178	6.9%	34.3%	71.3%	74.7%
	Computing	185	7.2%	29.7%	66.5%	73.0%
	Engineering	1658	64.4%	28.5%	70.6%	79.9%
	Ivan Allen	121	4.7%	39.7%	76.0%	81.0%
	Scheller/Business	157	6.1%	43.3%	82.8%	84.7%
	Sciences	276	10.7%	51.1%	77.9%	82.2%
2005	<b>Total</b>	<b>2419</b>		<b>*31.3%</b>	<b>72.3%</b>	<b>78.8%</b>
	Architecture	145	6.0%	48.3%	75.2%	78.6%
	Computing	158	6.5%	22.8%	63.3%	72.2%
	Engineering	1524	63.0%	27.0%	72.1%	79.1%
	Ivan Allen	173	7.2%	44.5%	76.3%	83.8%
	Scheller/Business	163	6.7%	30.7%	74.8%	76.7%
	Sciences	256	10.6%	43.8%	72.7%	78.9%
2006	<b>Total</b>	<b>2838</b>		<b>*33.6%</b>	<b>72.3%</b>	<b>79.3%</b>
	Architecture	174	6.1%	38.5%	77.6%	83.3%
	Computing	231	8.1%	30.7%	69.7%	76.2%
	Engineering	1760	62.0%	28.9%	71.3%	79.6%
	Ivan Allen	184	6.5%	47.8%	76.6%	81.0%
	Scheller/Business	171	6.0%	45.0%	77.8%	81.9%
	Sciences	318	11.2%	44.3%	71.4%	75.5%
2007	<b>Total</b>	<b>2624</b>		<b>*40.9%</b>	<b>76.3%</b>	<b>82.1%</b>
	Architecture	144	5.5%	47.2%	76.4%	80.6%
	Computing	164	6.3%	46.3%	74.4%	79.3%
	Engineering	1660	63.3%	36.6%	75.9%	82.1%
	Ivan Allen	169	6.4%	50.3%	72.8%	76.9%
	Scheller/Business	198	7.5%	50.0%	82.3%	88.9%
	Sciences	289	11.0%	47.1%	77.5%	83.0%
2008	<b>Total</b>	<b>2633</b>		<b>*37.0%</b>	<b>74.7%</b>	<b>81.5%</b>
	Architecture	128	4.9%	51.6%	78.1%	83.6%
	Computing	172	6.5%	42.4%	74.4%	77.3%
	Engineering	1686	64.0%	32.2%	74.1%	82.3%
	Ivan Allen	199	7.6%	47.2%	78.9%	82.9%
	Scheller/Business	170	6.5%	39.4%	77.1%	82.9%
	Sciences	278	10.6%	47.1%	72.7%	76.6%
2009	<b>Total</b>	<b>2655</b>		<b>*40.1%</b>	<b>*78.4%</b>	
	Architecture	122	4.6%	55.7%	79.5%	
	Computing	163	6.1%	49.1%	77.3%	
	Engineering	1760	66.3%	34.4%	77.3%	
	Ivan Allen	157	5.9%	51.0%	84.1%	
	Scheller/Business	166	6.3%	58.4%	86.7%	
	Sciences	287	10.8%	46.3%	77.4%	
2010	<b>Total</b>	<b>2706</b>		<b>*41.0%</b>		
	Architecture	91	3.4%	61.5%		
	Computing	172	6.4%	55.8%		
	Engineering	1799	66.5%	34.4%		
	Ivan Allen	150	5.5%	49.3%		
	Scheller/Business	178	6.6%	51.7%		
	Sciences	316	11.7%	55.1%		

\* Significant difference ( $p \leq 0.05$ )

Table 12. Graduation Rates by Pell Status

Year	Freshman Cohort			Graduation Rates (through Summer term)		
	Pell	n	%	4 Yrs	5 Yrs	6 Yrs
2006	<b>Total</b>	<b>2838</b>		<b>33.6%</b>	<b>*72.3%</b>	<b>*79.3%</b>
	Pell	321	11.3%	32.4%	65.1%	72.3%
	No Pell	2517	88.7%	33.7%	73.2%	80.2%
2007	<b>Total</b>	<b>2624</b>		<b>40.9%</b>	<b>76.3%</b>	<b>*82.1%</b>
	Pell	298	11.4%	37.9%	72.5%	78.2%
	No Pell	2326	88.6%	41.2%	76.8%	82.6%
2008	<b>Total</b>	<b>2633</b>		<b>37.0%</b>	<b>*74.7%</b>	<b>81.5%</b>
	Pell	271	10.3%	31.7%	69.4%	77.9%
	No Pell	2362	89.7%	37.6%	75.3%	82.0%
2009	<b>Total</b>	<b>2655</b>		<b>*40.1%</b>	<b>*78.4%</b>	
	Pell	378	14.2%	33.6%	71.2%	
	No Pell	2277	85.8%	41.2%	79.6%	
2010	<b>Total</b>	<b>2706</b>		<b>*41.0%</b>		
	Pell	457	16.9%	36.8%		
	No Pell	2249	83.1%	41.9%		

<sup>1</sup> Pell Status is defined as a student receiving Pell in their 1<sup>st</sup> cohort year.