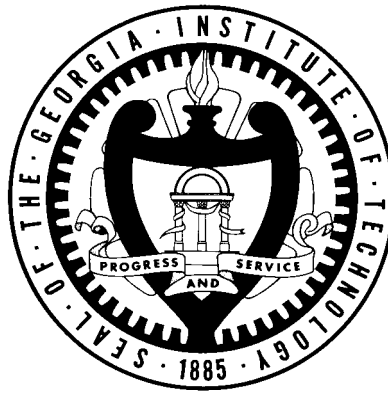




Georgia Institute **of Technology**

Annual Transfer Student Retention Study



Office of Institutional Research and Planning

Fall 2011

**Georgia Institute of Technology
Institutional Research and Planning
Annual Transfer Student Retention Study**

Institutional Research and Planning has studied the retention of undergraduate students transferring into Georgia Tech from the summer of 2001 through spring semester 2011. Cohorts have been defined as students who transferred into Georgia Tech any term summer through spring of the respective cohort year. Retention is defined as being enrolled (taking classes or coop-at-work/internship) or having graduated at each successive fall term. This report presents the retention and graduation percentages for each cohort overall and by admission status, gender, ethnicity, entering college, and other characteristics. Chi-Square tests of significance ($p \leq 0.05$) were conducted for each cohort's progression, and full tables of these comparisons are presented in an appendix. Retention rates among race-ethnicity categories with less than five students have been redacted due to FERPA issues.

2010 Transfer Cohort Profile

The 2010 transfer cohort experienced an overall increase in enrollment of 7% over the 2009 transfer cohort. The bulk of this growth was due to a 17% increase in spring transfers – fall transfers increased only slightly.

Georgia Perimeter College and Georgia Southern University are the largest suppliers of transfer students. Georgia State University, Southern Polytechnic State University and Kennesaw State University are also major sources whose relative contributions to the overall total have increased in recent years. In 2010, 57% of transfers came from USG schools. Many students report and carry course credit from more than one transfer institution – for the purposes of this study, a “main” transfer institution was identified based on the greatest amount of credits. If two institutions sourced the same amount of credits for an individual, the institution with the most recent dates of attendance was chosen.

There appears to be no discernible pattern to enrollment growth among ethnicities; however, International transfer student growth has been above 20% for the past two years, and Hispanic transfer student growth has been above 10% for the past three years. White students represented the majority of the transfer cohort at 55% (down from a record high of 60% in 2009), while Asians students represented 12% and African American students represented 11%. International transfer students represented 9% of the transfer cohort. Note that these comparisons are made using the new federally-mandated ethnicity breakouts – the appendix charts show prior-method ethnicity breakouts until the 2008 cohort.

African American students, once comprising over 20% of the transfer cohort in 2000, represented 11% of the 2010 cohort. However, the actual number of African American students has been rising since a record low of 62 in 2007. The general decline in African American transfer students as a percentage of the entire cohort has been a ten-year trend, further evidenced by the decreasing representation of Historically Black Colleges and Universities (HBCUs) in the transfer cohorts. Before 2003, over one-half of the African American students in each transfer cohort transferred from HBCUs - this number has decreased to only 18% in 2010. For example, the top two transfer institutions for African American students from 1999-2003 were Morehouse and Spelman. Beginning in 2004, Georgia Perimeter and Georgia Southern began to source the greatest number of African American transfer students. Additionally, the decline in the number of students participating in the College of Engineering Dual Degree program focusing on HBCUs has contributed to the decrease.

**Georgia Institute of Technology
Institutional Research and Planning
Annual Transfer Student Retention Study**

Hispanic transfer students experienced record high enrollment at 70 students in the 2010 transfer cohort – an 11% increase over the 2009 cohort. Miami-Dade College and Georgia Perimeter College source the largest numbers of Hispanic transfer students. An articulation agreement with Miami-Dade College and the Georgia Tech’s College of Engineering, as well as increased recruiting and scholarship activities of the Hispanic Initiatives program, may have played a role in the relatively high numbers of Hispanic transfers.

While sophomore transfers outnumbered juniors until 2005, juniors represented the largest part of the most recent cohort at 50%. Junior transfers are more likely to transfer from Georgia Southern University than the other top-producing schools, mostly due to Georgia Southern’s participation in both the Regents Engineering Transfer (RETP) and Georgia Tech Regional Engineering (GTREP) programs. The largest number of sophomore transfers came from Georgia State.

All types of transfers increased with the exception of the Georgia Tech Regional Engineering Program, which only decreased slightly. International transfers have grown by over 30% for the past two years.

Nearly 70% of transfer students transfer into the College of Engineering. The percentage of transfers into the College of Computing has risen steadily in recent years. As late as 2001, Computing transfers were nearly 20% of the transfer cohort and the college’s increasing share of recent transfer cohorts may be significant. Female representation in the transfer cohort remains steady between 20 to 25%.

Ninety-three percent of the 2010 transfer cohort was retained to its second year. Of all students not retained from the 2010 cohort, 42% were in good academic standing.

**Georgia Institute of Technology
Institutional Research and Planning
Annual Transfer Student Retention Study**

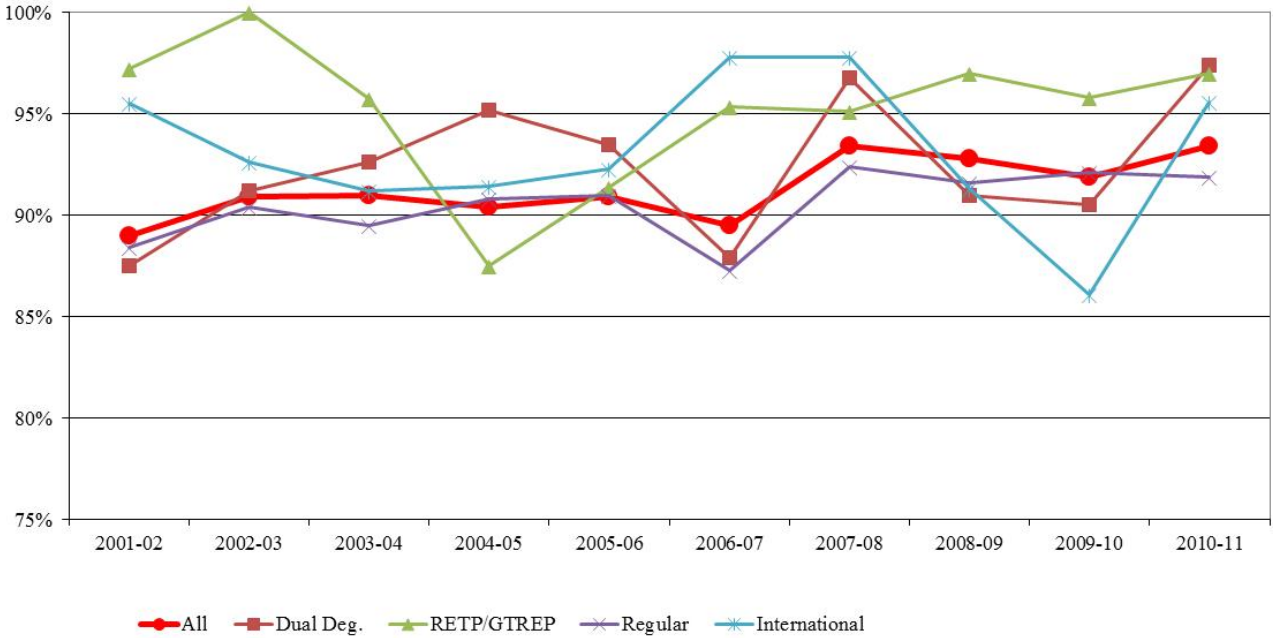
Retention

Retention to the second year varied between a low of 89% for the 2001 cohort and a high of 93% for the 2010 cohort (see Chart 1). Of all students not retained over the past 10 years, approximately 60% left Georgia Tech during their first year, and over 59% of these students left in good academic standing. Approximately 85% of transfer students were retained through four years, and 54% percent of those students not retained through four years were in good academic standing when they left.

- The largest percentage of transfer students enter as 'regular transfers' (63% of the 2010 cohort). While the differences in retention rates by admission status were statistically significant for the 2010 cohort, there is no indication that this is a pattern. Historically, transfer students admitted as “2nd Undergraduate” experience consistently lower retention rates while International transfers typically experience the highest. Additionally, GTREP and RETP transfers have demonstrated consistently high retention rates, especially in more recent cohorts.
- Females account for less than a quarter of entering transfer students. The percentage of females entering each cohort has decreased from 32% in the 1998 cohort to 23% in the 2010 cohort. Shorter-term female retention exceeded that of males in the 2008 cohort for the first time since the 2004, and has been even with male retention in the two most recent cohorts.
- White/Caucasian students typically account for nearly 60% of entering transfers. As mentioned earlier, black transfer students as a percentage of the total cohort have decreased to from a high of 20% in 2000 to 11% in 2010. Hispanic transfer students continue to exhibit high rates of retention. Retention rates among all other race ethnicity categories returned to usual levels after a particularly aberrant 2009 cohort. Retention differences by race/ethnicity are typically not statistically significant. Note that retention and percentage comparisons were made using the new federally-mandated race/ethnicity breakouts, while the appendix charts show the former method of race/ethnicity breakouts in cohorts prior to 2008.
- Over three-fourths of entering transfer students major in Engineering or Computing. Retention rates varied among entering colleges from cohort to cohort with no noticeable pattern, although Architecture and Management most often have a higher retention rate than the other colleges while Sciences typically experiences lower retention.
- As noted earlier, there appears to be a general shifting of the composition of transfer cohorts from more sophomores to more juniors, with juniors representing nearly 50% of the transfer cohort beginning in 2007. Freshman transfers typically experience the lowest retention among the classes although there is no clear pattern of statistical significance.
- The large majority of transfer students enter in the fall, and over three-fourths of transfer students are Georgia residents. Over 90% of transfer students are U.S. citizens. Very few significant differences by retention exist for these three areas.

**Georgia Institute of Technology
Institutional Research and Planning
Annual Transfer Student Retention Study**

Chart 1. Transfer Cohort Retention to the Second Year, by Admit Status*



*Note: 2nd Undergrad transfers not included

**Georgia Institute of Technology
Institutional Research and Planning
Annual Transfer Student Retention Study**

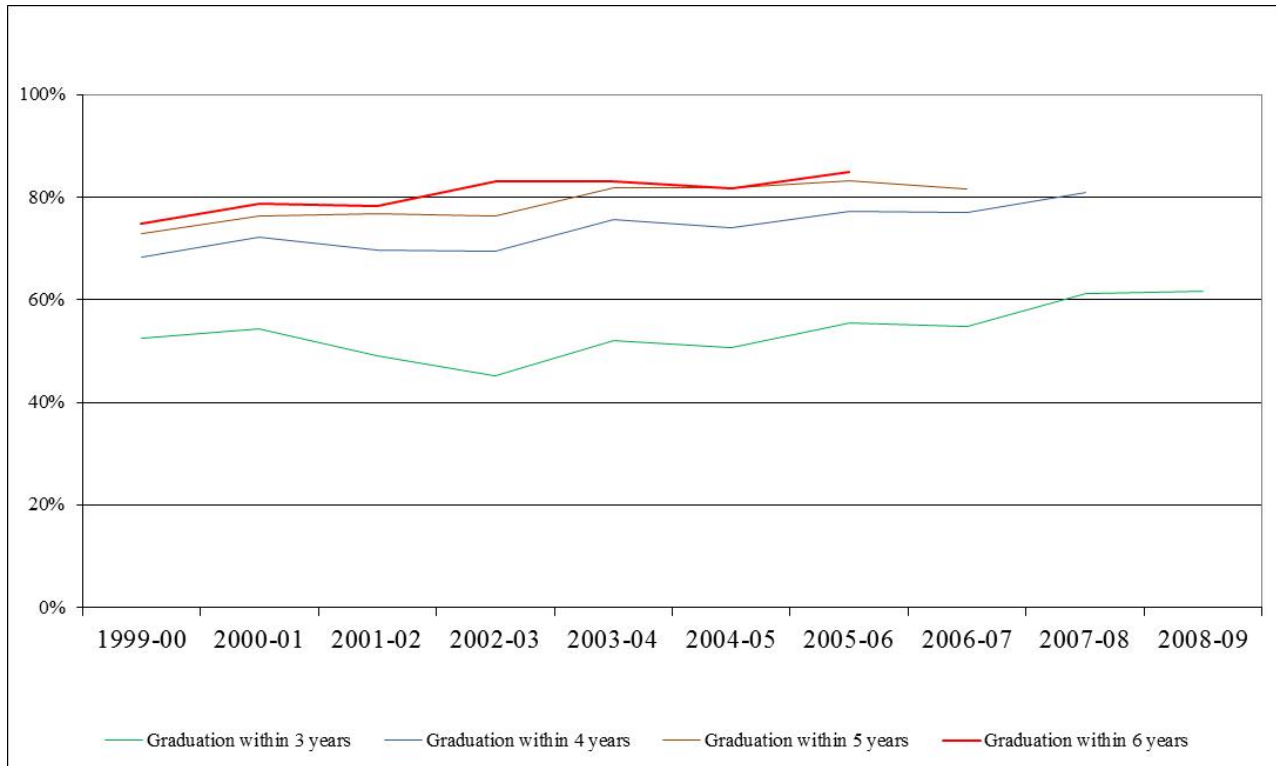
Graduation

By the end of the third year over half of all transfer students in each cohort had graduated, while over three-fourths of transfer students in cohorts 2000 through 2005 had graduated in six years (see Chart 2). There is only a slight difference between 5- and 6-year graduation rates of transfer students; the most significant jump in rates occurs between the second and third years. The 2005 cohort experienced a record-high six-year graduation rate of 85%, and the 2007 cohort had a record-high four-year graduation rate of 81%. Generally, graduation rates of transfer students are increasing and are on par with, or even exceed, traditional student graduation rates.

- Admission status has a significant effect on the graduation rates of transfer students. Fewer regular transfer students graduated in five years than other types of transfer students – this is likely due to the increased number of credits transferred by students participating in programs like RETP and GTREP. RETP and GTREP students also experienced the highest four-year graduation rates.
- Overall, there were minimal significant differences in graduation rates by gender. For earlier cohorts, females generally graduated faster and in higher percentages than males. However, the males in the 2003 cohort outpaced females in four-year graduation rates for the first time since the 1997 cohort, although females once again outpaced males in five-year graduation rates. Among the most recent cohorts, females outpaced males in two-year graduation rates and this trend should be monitored in future reports.
- When the small numbers of Native American and Multi-Racial students are excluded from analysis, significant differences in graduation rates based on ethnicity are present in the most recent cohorts. In terms of two-year graduation rates, Black/African American students have historically outpaced other ethnicities (perhaps due to their heavy representation in the dual-degree program), although this has slowed as the number of Black/African American transfer students has decreased. International and Hispanic students have also experienced high shorter-term graduation rates. Comparison of ethnicities is complicated by changing federal guidelines in race/ethnicity reporting – as more cohorts include new federally mandated categories (and distinction of International students), additional trends in graduation rates may emerge.
- There were some significant differences in graduation rates by entering college, but no consistent patterns emerged with the exception that transfer students within the College of Sciences typically experience the lowest five- and six-year graduation rates, while College of Management students typically graduate earlier than transfer students in other colleges.
- Transfer students participating in the co-op program experienced higher graduation rates than non-co-op students after three years, suggesting participation in the co-op program seems to play a significant role in graduation rates. In the shorter-term, non-co-op students graduate faster, but this is simply due to the fact that they're not spending an extra semester or year completing a co-op program.
- Among transfer students matriculating as juniors or seniors in the summer term, non-Georgia residents and non-U.S. citizens generally graduated at higher rates than their counterparts.

**Georgia Institute of Technology
Institutional Research and Planning
Annual Transfer Student Retention Study**

Chart 2. Transfer Cohort Graduation Rates.



**Georgia Institute of Technology
Institutional Research and Planning
Annual Transfer Student Retention Study**

Appendix

Table 1. Retention Rates Overall.

Transfer Cohort		Retention Rates (to next Fall term)					
Year	n	2nd Yr	3rd Yr	4th Yr	5th Yr	6th Yr	7th Yr
2001-02	627	89%	82%	81%	80%	80%	80%
2002-03	568	91%	83%	79%	81%	79%	80%
2003-04	655	91%	85%	83%	83%	84%	84%
2004-05	720	90%	85%	82%	82%	82%	82%
2005-06	592	91%	88%	86%	87%	87%	87%
2006-07	626	90%	86%	85%	84%	84%	
2007-08	572	93%	91%	88%	87%		
2008-09	653	93%	90%	89%			
2009-10	749	92%	88%				
2010-11	803	93%					

Table 2. Graduation Rates Overall.

Transfer Cohort		Graduation Rates (through Summer term)				
Year	n	2 Yrs	3 Yrs	4 Yrs	5 Yrs	6 Yrs
2000-01	623	16%	54%	72%	76%	79%
2001-02	627	13%	49%	70%	77%	78%
2002-03	568	13%	45%	69%	76%	79%
2003-04	655	13%	52%	76%	82%	83%
2004-05	720	14%	51%	74%	81%	82%
2005-06	592	15%	55%	77%	83%	85%
2006-07	626	13%	55%	77%	82%	
2007-08	572	16%	61%	81%		
2008-09	653	15%	62%			
2009-10	749	12%				

**Georgia Institute of Technology
Institutional Research and Planning
Annual Transfer Student Retention Study**

Table 3. Retention Rates by Admission Status.

Transfer Cohort			Retention Rates (to next Fall term)					
Year	Status	n	2nd Yr	3 rd Yr	4th Yr	5th Yr	6th Yr	7th Yr
2001-02	Total	627	*89.0%	81.8%	*80.5%	*80.2%	*80.1%	*79.7%
	Dual Degree	64	87.5%	75.0%	78.1%	78.1%	78.1%	78.1%
	Internat. Dual	7	85.7%	71.4%	85.7%	85.7%	85.7%	85.7%
	RETP	54	94.4%	83.3%	83.3%	83.3%	85.2%	83.3%
	GTREP	17	100.0%	100.0%	100.0%	100.0%	100.0%	100.00%
	Regular	396	88.4%	82.6%	80.1%	79.0%	79.0%	78.8%
	2nd Undergrad.	23	65.2%	47.8%	43.5%	52.2%	47.8%	47.8%
	International	66	95.5%	90.9%	90.9%	90.9%	89.4%	89.4%
2002-03	Total	568	90.9%	*82.9%	*79.4%	*80.6%	*79.4%	*80.3%
	Dual Degree	57	91.2%	79.0%	80.7%	78.9%	79.0%	80.7%
	Internat. Dual	2	50.0%	50.0%	50.0%	50.0%	50.0%	50.0%
	RETP	41	100.0%	95.1%	97.6%	97.6%	97.6%	97.6%
	GTREP	14	100.0%	100.0%	100.0%	100.0%	100.0%	92.9%
	Regular	354	90.4%	81.6%	76.3%	77.7%	75.7%	76.6%
	2nd Undergrad.	19	68.4%	57.9%	57.9%	57.9%	57.9%	63.2%
	International	81	92.6%	88.9%	85.2%	88.9%	88.9%	90.1%
2003-04	Total	655	91.0%	85.0%	82.6%	83.2%	83.8%	83.7%
	Dual Degree	54	92.6%	81.5%	81.5%	81.5%	81.5%	81.7%
	Internat. Dual	1	100.0%	100.0%	100.0%	100.0%	100.0%	100.0%
	RETP	65	96.9%	93.8%	93.8%	93.9%	92.3%	90.1%
	GTREP	37	94.6%	91.9%	89.2%	89.2%	89.2%	88.9%
	Regular	409	89.5%	83.6%	81.2%	81.2%	81.9%	82.1%
	2 nd Undergrad.	13	84.6%	76.9%	76.9%	76.9%	92.3%	93.6%
	International	76	91.2%	85.5%	78.9%	84.2%	84.2%	84.1%
2004-05	Total	720	90.4%	*84.9%	*81.7%	*82.1%	82.2%	82.6%
	Dual Degree	42	95.2%	76.2%	81.0%	81.0%	81.4%	81.4%
	Internat. Dual	4	100.0%	100.0%	100.0%	100.0%	100.0%	100.0%
	RETP	85	90.6%	87.1%	82.4%	87.1%	85.1%	85.1%
	GTREP	45	84.4%	82.2%	82.2%	82.2%	83.4%	83.4%
	Regular	447	90.8%	85.5%	81.4%	81.2%	80.9%	81.5%
	2 nd Undergrad.	16	75.0%	56.3%	50.0%	50.0%	60.3%	59.8%
	International	81	91.4%	90.1%	87.7%	87.7%	87.8%	89.1%
2005-06	Total	592	90.9%	88.2%	85.8%	86.6%	86.9%	86.6%
	Dual Degree	31	93.5%	90.3%	87.1%	89.6%	86.7%	90.3%
	Internat. Dual	1	100.0%	100.0%	100.0%	100.0%	100.0%	100.0%
	RETP	102	90.2%	85.2%	83.3%	84.6%	84.6%	85.3%
	GTREP	40	92.5%	92.5%	92.5%	92.6%	92.6%	92.5%
	Regular	356	91.0%	88.5%	85.4%	85.2%	85.9%	85.4%
	2 nd Undergrad.	10	70.0%	70.0%	70.0%	75.6%	75.6%	66.7%
	International	52	92.3%	90.4%	90.4%	94.0%	96.1%	70.0%

(continued)

**Georgia Institute of Technology
Institutional Research and Planning
Annual Transfer Student Retention Study**

Table 3. Retention Rates by Admission Status (continued).

Transfer Cohort			Retention Rates (to next Fall term)					
Year	Status	n	2nd Yr	3rd Yr	4th Yr	5th Yr	6th Yr	7th Yr
2006-07	Total	626	*89.5%	*85.5%	84.5%	*83.9%	*83.6%	
	Dual Degree	33	87.9%	78.8%	78.9%	78.9%	78.8%	
	Internat. Dual	4	100.0%	75.0%	75.5%	75.5%	75.0%	
	RETP	99	92.9%	89.9%	87.7%	89.7%	87.9%	
	GTREP	46	97.8%	95.7%	92.9%	91.0%	91.3%	
	Regular	386	87.3%	83.7%	82.5%	81.4%	81.3%	
	2 nd Undergrad.	13	69.2%	53.8%	72.3%	62.8%	61.5%	
	International	45	97.8%	95.6%	93.3%	95.6%	95.6%	
2007-08	Total	572	*93.4%	90.6%	87.8%	87.3%		
	Dual Degree	31	96.8%	87.2%	87.2%	87.1%		
	Internat. Dual	3	100.0%	100.0%	100.0%	100.0%		
	RETP	89	92.1%	87.1%	84.3%	84.3%		
	GTREP	56	98.2%	92.7%	93.0%	91.1%		
	Regular	343	92.4%	90.6%	86.6%	86.3%		
	2 nd Undergrad.	5	60.0%	100.0%	100.0%	100.0%		
	International	45	97.8%	95.6%	93.6%	93.3%		
2008-09	Total	653	92.8%	89.9%	88.6%			
	Dual Degree	34	91.0%	88.7%	82.4%			
	Internat. Dual	9	100.0%	100.0%	100.0%			
	RETP	117	97.3%	95.0%	94.0%			
	GTREP	49	96.2%	88.0%	91.8%			
	Regular	395	91.6%	89.2%	86.3%			
	2 nd Undergrad.	12	83.3%	82.8%	83.3%			
	International	37	89.9%	87.0%	94.6%			
2009-10	Total	749	*91.9%	*87.8%				
	Dual Degree	31	90.5%	93.5%				
	Internat. Dual	1	100.0%	100.0%				
	RETP	107	98.2%	93.5%				
	GTREP	51	90.7%	90.2%				
	Regular	492	92.1%	87.4%				
	2 nd Undergrad.	17	62.6%	64.7%				
	International	50	85.8%	82.0%				
2010-11	Total	803	*93.4%					
	Dual Degree	39	97.4%					
	Internat. Dual	2	100.0%					
	RETP	111	98.2%					
	GTREP	49	93.9%					
	Regular	505	91.9%					
	2 nd Undergrad.	27	88.9%					
	International	70	95.5%					

* significant difference ($p \leq 0.05$)

**Georgia Institute of Technology
Institutional Research and Planning
Annual Transfer Student Retention Study**

Table 4. Retention Rates by Gender.

Transfer Cohort			Retention Rates (to next Fall term)					
Year	Gender	n	2nd Yr	3rd Yr	4th Yr	5th Yr	6th Yr	7th Yr
2001-02	Total	627	*89.0%	81.8%	80.5%	80.2%	80.1%	79.7%
	Female	162	83.3%	78.4%	79.0%	76.5%	76.5%	76.5%
	Male	465	91.0%	83.0%	81.1%	81.5%	81.3%	80.9%
2002-03	Total	568	90.8%	82.9%	79.4%	80.6%	76.2%	80.3%
	Female	153	90.9%	82.4%	79.2%	77.9%	77.8%	78.4%
	Male	415	90.8%	83.1%	79.5%	81.6%	80.0%	81.0%
2003-04	Total	655	91.0%	85.0%	82.6%	83.2%	83.8%	83.7%
	Female	152	88.8%	80.9%	77.0%	80.9%	82.2%	82.4%
	Male	503	91.7%	86.3%	84.3%	83.9%	84.3%	84.1%
2004-05	Total	720	90.4%	*84.9%	81.7%	82.1%	82.2%	82.6%
	Female	180	91.7%	86.1%	82.2%	83.9%	83.8%	85.0%
	Male	540	90.0%	84.4%	81.5%	81.5%	81.6%	81.8%
2005-06	Total	592	90.9%	88.2%	85.8%	86.6%	86.9%	86.6%
	Female	135	89.6%	90.4%	86.7%	85.8%	85.8%	87.4%
	Male	457	91.2%	87.5%	85.6%	86.8%	87.3%	86.3%
2006-07	Total	626	89.5%	85.5%	84.5%	83.9%	83.6%	
	Female	151	86.8%	81.5%	80.8%	81.6%	79.6%	
	Male	475	90.3%	86.7%	85.7%	84.6%	84.9%	
2007-08	Total	572	*93.4%	*90.6%	*87.8%	*87.3%		
	Female	113	88.5%	85.5%	81.5%	78.1%		
	Male	459	94.6%	91.9%	89.3%	89.6%		
2008-09	Total	653	*92.8%	89.9%	*88.6%			
	Female	147	93.8%	88.5%	85.1%			
	Male	506	92.6%	90.3%	89.6%			
2009-10	Total	749	91.9%	87.8%				
	Female	159	91.9%	89.9%				
	Male	590	91.9%	87.2%				
2010-11	Total	803	93.4%					
	Female	183	93.4%					
	Male	620	93.4%					

* significant difference ($p \leq 0.05$)

**Georgia Institute of Technology
Institutional Research and Planning
Annual Transfer Student Retention Study**

Table 5. Retention Rates by Ethnicity.

Year	Transfer Cohort		Retention Rates (to next Fall term)					
	Ethnicity	n	2nd Yr	3rd Yr	4th Yr	5th Yr	6th Yr	7th Yr
2001-02	Total	627	89.0%	*81.8%	*80.5%	*80.2%	80.1%	79.7%
	Asian	120	91.7%	90.0%	86.7%	80.5%	84.2%	85.0%
	Black/African-Am.	112	84.8%	70.5%	70.5%	71.4%	71.4%	72.3%
	Hispanic	31	90.3%	77.4%	83.9%	90.3%	83.9%	83.9%
	Native American	2	█	█	█	█	█	█
	Multi-Racial	1	█	█	█	█	█	█
	White/Caucasian	361	89.2%	82.8%	81.1%	80.2%	80.7%	79.8%
2002-03	Total	568	90.8%	82.9%	79.4%	80.6%	79.4%	80.3%
	Asian	122	91.8%	82.0%	75.0%	78.2%	76.2%	76.2%
	Black/African-Am.	112	91.1%	79.5%	77.0%	75.2%	75.9%	76.8%
	Hispanic	35	91.4%	88.6%	83.8%	78.4%	80.0%	85.7%
	Native American	2	█	█	█	█	█	█
	Multi-Racial	2	█	█	█	█	█	█
	White/Caucasian	295	90.2%	83.7%	81.7%	84.1%	82.0%	82.7%
2003-04	Total	655	91.0%	*85.0%	*82.6%	*83.2%	*83.8%	83.7%
	Asian	142	95.1%	90.1%	85.9%	89.4%	90.1%	90.3%
	Black/African-Am.	125	88.8%	72.8%	70.4%	73.6%	73.6%	71.8%
	Hispanic	43	90.7%	86.4%	84.1%	81.4%	83.7%	82.5%
	Native American	1	█	█	█	█	█	█
	Multi-Racial	3	█	█	█	█	█	█
	White/Caucasian	341	90.0%	87.4%	85.3%	84.2%	84.8%	85.0%
2004-05	Total	720	90.4%	*84.9%	*81.7%	82.1%	*82.2%	82.6%
	Asian	161	91.9%	87.0%	82.6%	85.1%	86.1%	86.1%
	Black/African-Am.	109	88.1%	72.5%	72.5%	73.4%	71.2%	73.2%
	Hispanic	38	97.4%	94.7%	89.5%	86.8%	90.7%	90.1%
	Native American	2	█	█	█	█	█	█
	Multi-Racial	5	█	█	█	█	█	█
	White/Caucasian	405	89.9%	86.4%	83.0%	82.7%	82.3%	82.6%
2005-06	Total	592	*90.9%	88.2%	85.8%	86.6%	86.9%	86.6%
	Asian	115	93.0%	88.7%	87.8%	87.7%	87.3%	86.9%
	Black/African-Am.	81	85.2%	80.3%	79.0%	81.2%	81.2%	82.3%
	Hispanic	39	82.1%	92.3%	84.6%	86.9%	87.5%	80.9%
	Native American	1	█	█	█	█	█	█
	Multi-Racial	2	█	█	█	█	█	█
	White/Caucasian	354	92.4%	89.3%	86.7%	87.2%	88.0%	87.6%
2006-07	Total	626	89.5%	85.5%	84.5%	83.9%	83.6%	
	Asian	120	90.0%	87.5%	87.1%	88.0%	86.9%	
	Black/African-Am.	88	90.9%	80.7%	80.7%	79.2%	77.9%	
	Hispanic	60	86.7%	86.7%	85.0%	82.2%	82.5%	
	Native American	2	█	█	█	█	█	
	Multi-Racial	1	█	█	█	█	█	
	White/Caucasian	352	89.2%	85.5%	84.4%	83.6%	83.9%	
	Unknown	3	█	█	█	█	█	

(continued)

**Georgia Institute of Technology
Institutional Research and Planning
Annual Transfer Student Retention Study**

Table 5. Retention Rates by Ethnicity (continued).

Year	Transfer Cohort		Retention Rates (to next Fall term)					
	Ethnicity	n	2nd Yr	3rd Yr	4th Yr	5th Yr	6th Yr	7th Yr
2007-08	Total	572	93.4%	*90.6%	87.8%	87.3%		
	Asian	111	97.3%	95.4%	87.3%	88.8%		
	Black/African-Am.	65	92.3%	85.7%	81.3%	82.6%		
	Hispanic	54	94.4%	94.5%	94.8%	94.6%		
	Native American	2	██████	██████	██████	██████		
	Multi-Racial							
	White/Caucasian	332	92.2%	90.1%	88.6%	86.9%		
	Unknown	8	87.5%	74.1%	74.1%	66.7%		
2008-09**	Total	653	92.8%	89.9%	*88.6%			
	Am. Indian/Alaskan	2	██████	██████	██████			
	Asian	85	94.9%	86.8%	84.7%			
	Black/Afr. Am.	76	92.3%	84.2%	77.6%			
	Hispanic/Latino	55	95.2%	89.9%	86.0%			
	International	43	91.5%	91.7%	95.5%			
	Two/More Races	24	96.0%	96.0%	95.8%			
	Unknown	13	100.0%	83.1%	75.0%			
	White	355	91.7%	91.4%	91.3%			
2009-10	Total	749	*91.9%	87.8%				
	Am. Indian/Alaskan							
	Asian	73	95.8%	93.1%				
	Black/Afr. Am.	91	85.7%	82.6%				
	Hispanic/Latino	61	96.9%	85.7%				
	International	54	86.8%	81.8%				
	Native Hwn/Pac Isl	2	██████	██████				
	Two/More Races	12	74.8%	69.2%				
	Unknown	2	██████	██████				
White	454	92.8%	89.4%					
2010-11	Total	803	93.4%					
	Am. Indian/Alaskan	2	██████					
	Asian	99	91.9%					
	Black/Afr. Am.	90	92.2%					
	Hispanic/Latino	70	94.3%					
	International	72	94.4%					
	Native Hwn/Pac Isl							
	Two/More Races	20	100.0%					
	Unknown	7	100.0%					
White	443	93.2%						

* significant difference ($p \leq 0.05$), when Native American, Undisclosed and Multi-Racial excluded

**Due to a change in federal guidelines regarding race/ethnicity reporting, the 2008-09 cohort and all future cohort ethnicity breakdowns are slightly different from pre -2008 cohorts.

**Georgia Institute of Technology
Institutional Research and Planning
Annual Transfer Student Retention Study**

Table 6. Retention Rates by Entering College.

Year	Transfer Cohort		Retention Rates (to next Fall term)					
	Entering College	n	2nd Yr	3rd Yr	4 th Yr	5th Yr	6th Yr	7th Yr
2001-02	Total	627	89.0%	81.8%	80.5%	80.2%	80.1%	79.7%
	Architecture	22	95.5%	86.4%	86.4%	81.8%	86.4%	86.4%
	Computing	110	86.4%	80.9%	80.9%	79.1%	78.2%	77.3%
	Engineering	390	90.0%	82.1%	80.3%	81.3%	80.8%	80.5%
	Ivan Allen	19	94.7%	84.2%	84.2%	84.2%	84.2%	84.2%
	Management	30	90.0%	86.7%	90.0%	90.0%	86.7%	86.7%
	Sciences	56	82.1%	76.8%	73.2%	67.9%	71.4%	71.4%
2002-03	Total	568	90.8%	*82.9%	*79.4%	*80.6%	*79.4%	*80.3%
	Architecture	28	85.7%	89.3%	82.1%	78.6%	78.6%	82.1%
	Computing	64	82.8%	75.0%	68.8%	75.0%	70.3%	71.9%
	Engineering	386	92.2%	83.9%	81.3%	82.6%	81.4%	81.9%
	Ivan Allen	13	100.0%	84.6%	84.6%	84.6%	84.6%	84.6%
	Management	29	100.0%	96.6%	93.1%	93.1%	96.6%	96.6%
	Sciences	48	85.4%	72.9%	66.7%	64.6%	64.6%	66.7%
2003-04	Total	655	91.0%	85.0%	82.6%	83.2%	83.8%	83.7T
	Architecture	33	97.0%	90.9%	90.9%	90.9%	93.9%	91.3%
	Computing	57	93.0%	86.0%	84.2%	82.5%	84.2%	85.8%
	Engineering	474	90.7%	84.2%	81.6%	82.9%	83.5%	83.3%
	Ivan Allen	12	100.0%	83.3%	83.3%	83.3%	83.3%	82.7%
	Management	22	95.5%	95.5%	100.0%	95.5%	95.5%	95.9%
	Sciences	57	84.2%	84.2%	77.2%	77.2%	75.4%	75.8%
2004-05	Total	720	90.4%	*84.9%	*81.7%	82.1%	82.2%	82.6%
	Architecture	51	94.1%	88.2%	86.3%	84.3%	83.6%	85.4%
	Computing	57	93.0%	87.7%	84.2%	84.2%	83.9%	83.9%
	Engineering	495	89.7%	85.1%	82.0%	81.8%	82.2%	82.8%
	Ivan Allen	13	100.0%	100.0%	100.0%	100.0%	100.0%	100.0%
	Management	30	90.0%	93.3%	86.7%	93.3%	92.3%	92.3%
	Sciences	74	89.2%	73.0%	68.9%	73.0%	72.8%	71.9%
2005-06	Total	592	90.9%	88.2%	85.8%	86.6%	86.9%	86.6%
	Architecture	31	96.8%	90.3%	90.3%	91.4%	88.9%	83.9%
	Computing	25	92.0%	88.0%	92.0%	83.8%	83.8%	88.0%
	Engineering	450	90.9%	88.2%	85.6%	87.0%	86.9%	86.3%
	Ivan Allen	16	93.8%	93.8%	93.8%	94.3%	94.3%	93.8%
	Management	18	88.9%	83.3%	83.3%	82.8%	89.1%	88.9%
	Sciences	52	86.5%	86.5%	80.8%	80.5%	84.6%	86.5%
2006-07	Total	626	89.5%	85.5%	84.5%	83.9%	83.6%	
	Architecture	34	94.1%	88.2%	92.4%	94.6%	94.1%	
	Computing	36	88.9%	88.9%	88.8%	85.8%	86.1%	
	Engineering	446	89.5%	85.9%	84.3%	84.2%	83.7%	
	Ivan Allen	14	100.0%	92.9%	91.8%	84.9%	85.7%	
	Management	28	100.0%	92.9%	93.4%	89.6%	92.9%	
	Sciences	68	80.9%	75.0%	74.2%	72.6%	72.1%	
2007-08	Total	572	93.4%	90.6%	87.8%	87.3%		
	Architecture	24	100.0%	95.2%	79.0%	79.2%		
	Computing	31	87.1%	86.0%	79.3%	77.4%		
	Engineering	419	94.0%	91.3%	89.2%	89.1%		
	Ivan Allen	22	95.5%	91.4%	87.1%	85.7%		
	Management	24	95.8%	91.0%	91.0%	87.5%		
	Sciences	52	86.5%	85.4%	83.4%	83.0%		

(continued)

**Georgia Institute of Technology
Institutional Research and Planning
Annual Transfer Student Retention Study**

Table 6. Retention Rates by Entering College (continued).

Year	Transfer Cohort		Retention Rates (to next Fall term)					
	Entering College	n	2nd Yr	3rd Yr	4 th Yr	5th Yr	6th Yr	7th Yr
2008-09	Total	653	92.8%	89.9%	88.6%			
	Architecture	27	100.0%	96.0%	89.3%			
	Computing	41	84.4%	82.0%	90.2%			
	Engineering	472	93.5%	90.1%	89.0%			
	Ivan Allen	26	92.9%	92.1%	96.2%			
	Management	31	93.2%	96.4%	87.1%			
	Sciences	56	90.0%	85.7%	80.4%			
2009-10	Total	749	91.9%	87.8%				
	Architecture	30	100.0%	100.0%				
	Computing	59	91.9%	83.1%				
	Engineering	531	91.5%	87.3%				
	Ivan Allen	26	91.8%	88.5%				
	Management	32	93.5%	93.8%				
	Sciences	71	90.2%	87.3%				
2010-11	Total	803	93.4%					
	Architecture	23	95.7%					
	Computing	84	89.3%					
	Engineering	553	94.8%					
	Ivan Allen	29	86.2%					
	Management	30	96.7%					
	Sciences	84	89.3%					

*significant difference ($p \leq 0.05$);

**Georgia Institute of Technology
Institutional Research and Planning
Annual Transfer Student Retention Study**

Table 7. Retention to the Second Year by Matriculation Term

Transfer Cohort	Matriculation Term							
	Total	Summer		Fall		Spring		
		%	N	%	N	%	N	
2001-02	*88.9%	75.8%	47	90.2%	376	90.6%	135	
2002-03	90.8%	83.6%	46	90.6%	326	94.1%	144	
2003-04	91.0%	88.7%	47	91.8%	382	89.8%	167	
2004-05	90.7%	90.0%	54	90.4%	434	91.7%	165	
2005-06	90.9%	87.1%	54	91.3%	358	91.3%	126	
2006-07	89.5%	91.1%	51	89.2%	372	89.5%	137	
2007-08	93.4%	95.4%	62	92.3%	338	95.0%	134	
2008-09	92.8%	90.8%	56	93.3%	380	92.5%	170	
2009-10	91.9%	90.0%	64	91.6%	497	93.1%	188	
2010-11	93.4%	94.6%	74	92.9%	509	94.1%	220	

*significant difference ($p \leq 0.05$)

Table 8. Retention to the Second Year by Class

Transfer Cohort	Entering Class**							
	Total	Sophomore		Junior		Senior		
		%	N	%	N	%	N	
2001-02	88.9%	89.8%	291	88.0%	191	90.2%	37	
2002-03	90.8%	90.8%	257	92.4%	183	88.7%	55	
2003-04	*91.0%	87.6%	275	94.5%	222	93.2%	68	
2004-05	*90.7%	91.6%	294	91.4%	288	91.7%	55	
2005-06	90.9%	89.6%	225	92.5%	248	90.5%	57	
2006-07	89.5%	90.0%	243	89.0%	258	86.8%	46	
2007-08	*93.4%	93.1%	202	94.8%	276	90.6%	48	
2008-09	92.8%	93.2%	224	93.1%	319	90.8%	59	
2009-10	91.9%	92.3%	302	91.7%	383	91.7%	56	
2010-11	93.4%	92.9%	290	92.7%	370	98.8%	80	

*significant difference ($p \leq 0.05$)

**Freshman class excluded from statistical calculations due to small numbers

Table 9. Retention to the Second Year by State Residency and Citizenship

Transfer Cohort	Total	Georgia Residency				Citizenship			
		In-State		Out-of-State		US Citizen		Non-Citizen	
		%	N	%	N	%	N	%	N
2001-02	88.9%	88.9%	408	88.8%	150	88.2%	493	94.1%	64
2002-03	90.8%	90.3%	362	92.2%	154	90.5%	446	93.3%	70
2003-04	91.0%	91.8%	427	89.0%	169	90.9%	527	92.0%	69
2004-05	*90.7%	91.9%	500	87.0%	153	90.5%	581	92.3%	72
2005-06	90.9%	90.8%	434	91.2%	104	90.6%	494	93.6%	44
2006-07	89.5%	88.8%	461	92.5%	99	88.8%	516	97.8%	44
2007-08	93.4%	92.8%	426	95.6%	108	93.0%	489	97.8%	45
2008-09	92.8%	93.1%	516	91.4%	90	92.9%	567	91.5%	39
2009-10	*91.9%	93.1%	636	85.6%	113	92.3%	640	86.8%	47
2010-11	93.4%	92.8%	649	96.1%	154	93.3%	731	94.4%	72

* significant difference ($p \leq 0.05$) – significant difference by Residency, no significant difference by Citizenship

**Georgia Institute of Technology
Institutional Research and Planning
Annual Transfer Student Retention Study**

Table 10. Graduation Rates by Admission Status.

Transfer Cohort			Graduation Rates (through Summer term)				
Year	Status	n	2 Yrs	3 Yrs	4 Yrs	5 Yrs	6 Yrs
2000-01	Total	623	*16.1%	*54.3%	*72.1%	76.4%	78.7%
	Dual Degree	86	40.7%	75.6%	80.2%	80.2%	81.4%
	Internat. Dual	4	25.0%	100.0%	100.0%	100.0%	100.0%
	RETP	65	15.4%	69.2%	80.0%	80.0%	80.0%
	GTREP	12	58.3%	83.3%	91.7%	91.7%	100.0%
	Regular	385	9.4%	45.7%	68.6%	74.3%	76.6%
	2 nd Undergrad.	16	37.5%	50.0%	56.3%	68.8%	68.8%
	International	55	9.1%	54.6%	72.7%	78.2%	83.6%
2001-02	Total	627	13.1%	*49.1%	*69.7%	*76.7%	*78.3%
	Dual Degree	64	48.4%	70.3%	75.0%	76.6%	78.1%
	Internat. Dual	7	28.6%	71.4%	85.7%	85.7%	85.7%
	RETP	54	16.7%	63.0%	74.1%	79.6%	79.6%
	GTREP	17	47.1%	82.4%	100.0%	100.0%	100.0%
	Regular	396	5.1%	41.7%	66.9%	75.3%	77.3%
	2 nd Undergrad.	23	4.4%	34.8%	39.1%	39.1%	43.5%
	International	66	16.7%	56.1%	78.8%	89.4%	89.4%
2002-03	Total	568	*12.9%	*45.2%	*69.4%	*76.2%	*79.2%
	Dual Degree	57	31.6%	75.4%	78.9%	79.0%	78.9%
	Internat. Dual	2	50.0%	50.0%	50.0%	50.0%	50.0%
	RETP	41	29.3%	65.9%	85.4%	92.7%	97.6%
	GTREP	14	35.7%	92.9%	92.9%	92.9%	92.9%
	Regular	354	7.6%	36.2%	63.0%	71.5%	75.1%
	2 nd Undergrad.	19	15.8%	36.8%	52.6%	57.9%	63.2%
	International	81	8.6%	46.9%	82.7%	88.9%	90.1%
2003-04	Total	655	*13.3%	*52.1%	*75.7%	81.8%	*83.0%
	Dual Degree	54	18.5%	74.1%	79.6%	81.5%	81.7%
	Internat. Dual	1	100.0%	100.0%	100.0%	100.0%	100.0%
	RETP	65	21.5%	72.3%	89.2%	90.8%	90.1%
	GTREP	37	59.5%	83.8%	89.2%	89.2%	88.9%
	Regular	409	6.4%	43.8%	72.1%	79.0%	91.1%
	2 nd Undergrad.	13	23.1%	61.5%	69.2%	92.3%	93.6%
	International	76	14.5%	46.1%	75.0%	81.6%	84.1%
2004-05	Total	720	*13.8%	*50.7%	*74.0%	*80.6%	81.8%
	Dual Degree	42	40.5%	71.4%	76.2%	81.4%	81.4%
	Internat. Dual	4	25.0%	75.0%	75.0%	100.0%	100.0%
	RETP	85	18.8%	63.5%	80.0%	83.9%	85.1%
	GTREP	45	44.4%	75.6%	82.2%	83.4%	83.4%
	Regular	447	7.4%	43.0%	72.5%	79.5%	80.5%
	2 nd Undergrad.	16	18.8%	25.0%	43.8%	53.5%	54.9%
	International	81	11.1%	59.3%	76.5%	84.3%	87.8%

(continued)

**Georgia Institute of Technology
Institutional Research and Planning
Annual Transfer Student Retention Study**

Table 10. Graduation Rates by Admission Status (continued).

Year	Transfer Cohort		Graduation Rates (through Summer term)				
	Status	n	2 Yrs	3 Yrs	4 Yrs	5 Yrs	6 Yrs
2005-06	Total	592	*15.4%	*55.4%	*77.3%	*83.2%	84.9%
	Dual Degree	31	45.2%	80.6%	83.9%	83.9%	90.3%
	Internat. Dual	1	100.0%	100.0%	100.0%	100.0%	100.0%
	RETP	102	15.7%	58.8%	79.5%	84.6%	84.3%
	GTREP	40	52.5%	85.0%	90.1%	92.6%	92.5%
	Regular	356	8.7%	48.9%	73.9%	81.4%	83.4%
	2 nd Undergrad.	10	0.0%	30.0%	38.4%	50.6%	70.0%
	International	52	15.4%	59.6%	88.5%	92.4%	94.2%
2006-07	Total	626	*12.5%	*54.7%	*77.0%	*81.7%	
	Dual Degree	33	24.2%	70.3%	78.9%	78.8%	
	Internat. Dual	4	50.0%	75.5%	75.5%	75.0%	
	RETP	99	12.1%	62.2%	80.6%	87.9%	
	GTREP	46	34.8%	82.3%	88.9%	91.3%	
	Regular	386	8.5%	46.9%	74.4%	79.0%	
	2 nd Undergrad.	13	0.0%	47.5%	47.5%	53.8%	
	International	45	15.6%	67.2%	86.9%	93.3%	
2007-08	Total	572	*15.5%	*61.2%	81.0%		
	Dual Degree	31	26.4%	70.4%	83.9%		
	Internat. Dual	3	100.0%	100.0%	100.0%		
	RETP	89	12.9%	76.5%	83.1%		
	GTREP	56	47.4%	91.0%	91.1%		
	Regular	343	8.9%	50.1%	77.3%		
	2 nd Undergrad.	5	21.0%	63.3%	80.0%		
	International	45	18.0%	66.3%	88.9%		
2008-09	Total	653	*14.5%	*61.6%			
	Dual Degree	34	11.9%	70.6%			
	Internat. Dual	9	89.1%	100.0%			
	RETP	117	16.6%	82.1%			
	GTREP	49	47.1%	87.8%			
	Regular	395	8.0%	51.1%			
	2 nd Undergrad.	12	37.4%	66.7%			
	International	37	10.6%	54.1%			
2009-10	Total	752	*11.7%				
	Dual Degree	31	25.8%				
	Internat. Dual	1	100.0%				
	RETP	107	18.7%				
	GTREP	51	21.6%				
	Regular	492	7.9%				
	2 nd Undergrad.	17					
	International	53	16.0%				

* significant difference ($p \leq 0.05$)

**Georgia Institute of Technology
Institutional Research and Planning
Annual Transfer Student Retention Study**

Table 11. Graduation Rates by Gender.

Transfer Cohort			Graduation Rates (through Summer term)				
Year	Gender	n	2 Yrs	3 Yrs	4 Yrs	5 Yrs	6 Yrs
2000-01	Total	623	*16.1%	*54.3%	*72.1%	76.4%	78.7%
	Female	161	24.2%	64.0%	78.9%	80.1%	83.2%
	Male	462	13.2%	50.9%	69.7%	75.1%	77.1%
2001-02	Total	627	13.1%	49.1%	69.7%	76.7%	78.3%
	Female	162	17.3%	53.1%	71.6%	75.3%	75.9%
	Male	465	11.6%	47.7%	69.0%	77.2%	79.1%
2002-03	Total	568	12.9%	45.2%	69.4%	79.4%	79.2%
	Female	153	14.4%	43.5%	71.4%	77.8%	77.8%
	Male	415	12.3%	45.9%	68.6%	80.0%	79.8%
2003-04	Total	655	13.3%	52.1%	75.7%	81.5%	83.0%
	Female	152	13.8%	52.6%	73.0%	79.6%	82.4%
	Male	503	13.1%	51.9%	76.5%	82.1%	83.2%
2004-05	Total	720	13.8%	50.7%	74.0%	80.6%	81.8%
	Female	180	11.7%	50.6%	74.4%	83.1%	83.9%
	Male	540	14.4%	50.7%	73.9%	79.7%	81.0%
2005-06	Total	592	15.4%	55.4%	77.3%	83.2%	84.9%
	Female	135	14.8%	60.7%	75.6%	85.0%	85.2%
	Male	457	15.5%	53.8%	77.9%	82.6%	84.8%
2006-07	Total	626	12.5%	54.7%	77.0%	81.7%	
	Female	151	11.3%	52.2%	74.9%	82.6%	
	Male	475	12.8%	55.5%	77.7%	78.9%	
2007-08	Total	572	15.5%	*61.2%	*81.0%		
	Female	113	12.4%	54.1%	73.7%		
	Male	459	16.3%	62.9%	82.7%		
2008-09	Total	653	14.5%	61.6%			
	Female	147	19.1%	64.2%			
	Male	506	13.2%	60.8%			
2009-10	Total	752	11.7%				
	Female	159	13.8%				
	Male	593	11.1%				

* significant difference ($p \leq 0.05$)

**Georgia Institute of Technology
Institutional Research and Planning
Annual Transfer Student Retention Study**

Table 12. Graduation Rates by Ethnicity.

Year	Transfer Cohort		Graduation Rates (through Summer term)				
	Ethnicity	n	2 Yrs	3 Yrs	4 Yrs	5 Yrs	6 Yrs
2000-01	Total	623	*16.1%	54.3%	72.1%	76.4%	78.7%
	Asian	113	10.6%	48.7%	70.8%	75.9%	79.5%
	Black/African-Am.	137	29.9%	59.9%	67.9%	73.2%	75.4%
	Hispanic	26	15.4%	61.5%	65.4%	81.5%	85.2%
	Native American	0	na	na	na	na	na
	Multi-Racial	7	0.0%	28.6%	57.1%	57.1%	57.1%
	White/Caucasian	340	12.7%	53.8%	75.0%	77.9%	79.6%
2001-02	Total	627	*13.1%	49.1%	69.7%	76.7%	78.3%
	Asian	120	4.2%	44.2%	71.7%	82.5%	84.2%
	Black/African-Am.	112	31.3%	56.3%	66.1%	69.6%	70.5%
	Hispanic	31	16.1%	58.1%	71.0%	80.6%	80.6%
	Native American	2	■	■	■	■	■
	Multi-Racial	1	■	■	■	■	■
	White/Caucasian	361	10.3%	47.2%	69.6%	76.3%	78.3%
2002-03	Total	568	*12.9%	45.2%	69.4%	76.2%	79.2%
	Asian	122	4.9%	34.7%	65.3%	72.1%	76.2%
	Black/African-Am.	112	16.1%	50.4%	69.9%	73.2%	75.9%
	Hispanic	35	8.6%	51.4%	75.7%	77.1%	80.0%
	Native American	2	■	■	■	■	■
	Multi-Racial	2	■	■	■	■	■
	White/Caucasian	295	14.9%	46.7%	69.9%	82.0%	81.7%
2003-04	Total	655	13.3%	52.1%	*75.7%	*81.5%	*83.0%
	Asian	142	9.2%	45.1%	77.5%	87.3%	88.9%
	Black/African-Am.	125	14.4%	51.2%	64.0%	68.8%	70.8%
	Hispanic	44	9.1%	54.5%	76.7%	83.7%	82.5%
	Native American	1	■	■	■	■	■
	Multi-Racial	4	■	■	■	■	■
	White/Caucasian	339	15.3%	54.9%	79.2%	83.3%	84.7%
2004-05	Total	720	13.8%	50.7%	74.0%	80.6%	*81.8%
	Asian	161	9.3%	47.8%	75.8%	83.7%	86.1%
	Black/African-Am.	109	15.6%	43.1%	64.2%	71.2%	71.2%
	Hispanic	38	10.5%	63.2%	81.6%	85.5%	88.7%
	Native American	2	■	■	■	■	■
	Multi-Racial	5	0.0%	40.0%	80.0%	100.0%	100.0%
	White/Caucasian	405	15.6%	52.6%	75.1%	81.0%	81.7%
2005-06	Total	592	15.4%	55.4%	77.3%	83.2%	84.9%
	Asian	115	7.8%	49.6%	80.6%	86.3%	84.1%
	Black/African-Am.	81	17.3%	56.8%	71.5%	78.8%	81.0%
	Hispanic	39	10.3%	51.3%	71.7%	76.3%	80.9%
	Native American	1	■	■	■	■	■
	Multi-Racial	2	■	■	■	■	■
	White/Caucasian	354	17.8%	57.3%	78.1%	88.0%	85.9%
2006-07	Total	626	12.5%	54.7%	77.0%	81.7%	
	Asian	120	7.5%	52.3%	79.8%	83.6%	
	Black/African-Am.	88	9.1%	50.0%	73.3%	77.9%	
	Hispanic	60	11.7%	55.6%	78.8%	79.4%	
	Native American	2	■	■	■	■	
	Multi-Racial	1	■	■	■	■	
	White/Caucasian	352	15.3%	56.4%	76.5%	82.5%	
	Unknown	3	■	■	■	■	

(continued)

**Georgia Institute of Technology
Institutional Research and Planning
Annual Transfer Student Retention Study**

Table 12. Graduation Rates by Ethnicity (continued).

Year	Transfer Cohort		Graduation Rates (through Summer term)				
	Ethnicity	n	2 Yrs	3 Yrs	4 Yrs	5 Yrs	6 Yrs
2007-08	Total	572	*15.5%	*61.2%	81.0%		
	Asian	111	8.1%	55.9%	84.1%		
	Black/African-Am.	65	9.8%	52.4%	73.9%		
	Hispanic	54	20.5%	68.3%	91.1%		
	Native American	2	██████	██████	██████		
	Multi-Racial				75.0%		
	White/Caucasian	332	18.8%	63.4%	80.4%		
	Unknown	8	0.0%	74.1%	66.7%		
2008-09**	Total	653	*14.5%	*61.6%			
	Am. Indian/Alaskan	2	██████	██████			
	Asian	85	7.0%	45.9%			
	Black/Afr.Am.	76	8.8%	56.6%			
	Hispanic/Latino	55	5.6%	52.6%			
	International	43	28.2%	68.2%			
	Two/More Races	24	16.1%	62.5%			
	Unknown	13	5.9%	75.0%			
	White	355	17.6%	66.3%			
2009-10	Total	752	*11.7%				
	Asian	72	9.7%				
	Black/Afr.Am.	92	13.0%				
	Hispanic/Latino	63	3.2%				
	International	55	18.2%				
	Native Hawaiian	2	██████				
	Two/More Races	13	7.7%				
	Unknown	1	██████				
White	454	12.1%					

* significant difference ($p \leq 0.05$), when Native American, Undisclosed, and Multi-Racial excluded

**Due to a change in federal guidelines regarding race/ethnicity reporting, the 2008-09 cohort and all future cohort ethnicity breakouts are slightly different from pre -2008 cohorts.

**Georgia Institute of Technology
Institutional Research and Planning
Annual Transfer Student Retention Study**

Table 13. Graduation Rates by Entering College.

Year	Transfer Cohort		Graduation Rates (through Summer term)				
	Entering College	n	2 Yrs	3 Yrs	4 Yrs	5 Yrs	6 Yrs
2000-01	Total	623	16.1%	*54.3%	*72.1%	*76.4%	*78.7%
	Architecture	19	0.0%	26.3%	68.4%	78.9%	78.9%
	Computing	96	9.4%	46.9%	65.6%	69.8%	71.9%
	Engineering	401	18.5%	57.6%	75.3%	80.0%	82.0%
	Ivan Allen	17	23.5%	64.7%	76.5%	76.5%	82.4%
	Management	48	14.6%	58.3%	75.0%	75.0%	81.3%
	Sciences	42	14.3%	42.9%	52.4%	57.1%	57.1%
2001-02	Total	627	*13.1%	*49.1%	69.7%	76.7%	78.3%
	Architecture	22	0.0%	22.7%	68.2%	86.4%	86.4%
	Computing	110	5.5%	38.2%	60.9%	71.8%	74.6%
	Engineering	390	16.7%	53.1%	72.1%	77.7%	79.2%
	Ivan Allen	19	5.3%	47.4%	73.7%	84.2%	84.2%
	Management	30	10.0%	53.3%	80.0%	83.3%	86.7%
	Sciences	56	12.5%	51.8%	64.3%	69.6%	69.6%
2002-03	Total	568	*12.9%	*45.2%	*69.4%	*76.2%	*79.2%
	Architecture	28	0.0%	10.7%	64.3%	67.9%	78.6%
	Computing	64	7.8%	26.6%	51.6%	64.1%	70.3%
	Engineering	386	13.7%	49.0%	72.0%	78.8%	80.8%
	Ivan Allen	13	30.8%	61.5%	76.9%	84.6%	84.6%
	Management	29	24.1%	72.4%	89.7%	96.6%	96.6%
	Sciences	48	8.3%	39.6%	60.4%	62.5%	66.7%
2003-04	Total	655	*13.3%	52.1%	75.7%	81.5%	83.0%
	Architecture	33	0.0%	39.4%	81.8%	87.9%	91.3%
	Computing	57	5.3%	49.1%	77.2%	84.2%	85.8%
	Engineering	474	15.6%	53.4%	75.5%	81.0%	82.4%
	Ivan Allen	12	8.3%	41.7%	66.7%	83.3%	82.7%
	Management	22	18.2%	72.7%	95.5%	95.5%	95.9%
	Sciences	57	8.8%	45.6%	66.7%	75.4%	75.8%
2004-05	Total	720	*13.8%	*50.7%	74.0%	80.6%	81.8%
	Architecture	51	0.0%	31.4%	74.5%	83.6%	83.6%
	Computing	57	3.5%	42.1%	73.7%	79.2%	82.0%
	Engineering	495	15.6%	52.9%	73.7%	80.5%	81.9%
	Ivan Allen	13	30.8%	69.2%	92.3%	100.0%	100.0%
	Management	30	33.3%	70.0%	90.0%	92.3%	92.3%
	Sciences	74	8.1%	44.6%	66.2%	71.9%	71.9%
2005-06	Total	592	15.4%	*55.4%	77.3%	83.2%	84.9%
	Architecture	31	0.0%	29.0%	72.6%	85.7%	83.9%
	Computing	25	16.0%	40.0%	71.7%	79.6%	84.0%
	Engineering	450	16.7%	58.4%	78.8%	84.0%	85.7%
	Ivan Allen	16	25.0%	75.0%	88.5%	94.3%	93.8%
	Management	18	22.2%	55.6%	77.8%	82.8%	88.9%
	Sciences	52	7.7%	46.2%	67.0%	73.0%	75.0%
2006-07	Total	626	*12.5%	54.7%	77.0%	81.7%	
	Architecture	34	5.9%	32.2%	79.2%	94.1%	
	Computing	36	0.0%	48.9%	71.2%	83.3%	
	Engineering	446	13.2%	57.1%	78.6%	82.0%	
	Ivan Allen	14	7.1%	48.2%	84.9%	85.7%	
	Management	28	25.0%	68.3%	89.6%	89.3%	
	Sciences	68	13.2%	50.1%	62.1%	69.1%	

(continued)

**Georgia Institute of Technology
Institutional Research and Planning
Annual Transfer Student Retention Study**

Table 13. Graduation Rates by Entering College (continued).

Year	Transfer Cohort		Graduation Rates (through Summer term)				
	Entering College	n	2 Yrs	3 Yrs	4 Yrs	5 Yrs	6 Yrs
2007-08	Total	572	15.5%	*61.2%	*81.0%		
	Architecture	24	0.0%	36.4%	70.8%		
	Computing	31	11.9%	32.5%	61.3%		
	Engineering	419	16.6%	66.3%	83.7%		
	Ivan Allen	22	13.7%	54.5%	85.7%		
	Management	24	19.4%	58.4%	87.5%		
	Sciences	52	14.7%	51.7%	69.8%		
2008-09	Total	653	14.5%	*61.6%			
	Architecture	27	0.0%	32.1%			
	Computing	41	7.1%	53.7%			
	Engineering	472	16.5%	63.9%			
	Ivan Allen	26	7.6%	57.7%			
	Management	31	17.6%	71.0%			
	Sciences	56	12.3%	58.9%			
2009-10	Total	752	11.7%				
	Architecture	30					
	Computing	59	10.2%				
	Engineering	534	11.6%				
	Ivan Allen	26	15.4%				
	Management	32	21.9%				
	Sciences	71	12.7%				

* significant difference ($p \leq 0.05$)

**Georgia Institute of Technology
Institutional Research and Planning
Annual Transfer Student Retention Study**

Table 14. Graduation Rates by Co-Op Participation

Transfer Cohort			Graduation Rates (through Summer term)				
Year	Gender	n	2 Yrs	3 Yrs	4 Yrs	5 Yrs	6 Yrs
2000-01	Total	623	*16.1%	*54.3%	72.1%	76.4%	78.7%
	Co-Op	132	3.8%	41.7%	73.5%	82.6%	83.3%
	Non Co-Op	491	19.4%	57.6%	71.7%	74.8%	77.4%
2001-02	Total	627	*13.1%	*49.1%	69.7%	*76.7%	*78.3%
	Co-Op	146	7.5%	41.8%	71.9%	83.6%	88.4%
	Non Co-Op	481	14.7%	51.2%	68.9%	74.5%	75.1%
2002-03	Total	568	*12.9%	*45.2%	69.4%	*76.2%	*79.2%
	Co-Op	178	7.3%	36.5%	74.7%	86.5%	89.3%
	Non Co-Op	390	15.4%	49.2%	66.9%	71.5%	74.1%
2003-04	Total	655	13.3%	52.1%	*75.7%	*81.5%	83.0%
	Co-Op	194	9.3%	52.6%	83.5%	89.2%	88.3%
	Non Co-Op	461	15.0%	51.8%	72.5%	77.9%	82.0%
2004-05	Total	720	*13.8%	50.7%	*74.0%	*80.6%	*81.8%
	Co-Op	205	7.3%	48.8%	83.9%	89.6%	92.5%
	Non Co-Op	515	16.3%	51.5%	70.1%	79.0%	79.9%
2005-06	Total	592	*15.4%	55.4%	*77.3%	*83.2%	*84.9%
	Co-Op	154	5.8%	58.4%	85.9%	91.9%	95.7%
	Non Co-Op	438	18.7%	54.3%	76.0%	81.8%	82.9%
2006-07	Total	626	*12.5%	54.7%	*77.0%	*81.7%	
	Co-Op	182	6.0%	50.0%	88.8%	95.9%	
	Non Co-Op	444	15.1%	55.5%	75.1%	78.3%	
2007-08	Total	572	*15.5%	*61.2%	81.0%		
	Co-Op	182	5.6%	53.0%	83.5%		
	Non Co-Op	444	17.3%	62.7%	80.5%		
2008-09	Total	653	14.5%	61.6%			
	Co-Op	104	14.0%	55.1%			
	Non Co-Op	549	14.6%	62.8%			
2009-10	Total	752	11.7%				
	Co-Op	126	7.1%				
	Non Co-Op	626	12.6%				

* significant difference ($p \leq 0.05$)

**Georgia Institute of Technology
Institutional Research and Planning
Annual Transfer Student Retention Study**

Table 15. Six-Year Graduation Rates (through Summer term) by Matriculation Term

Transfer Cohort	Total	Matriculation Term					
		Summer		Fall		Spring	
		%	N	%	N	%	N
2000-01	78.7%	82.4%	42	78.9%	341	76.4%	107
2001-02	78.3%	70.5%	44	80.8%	337	74.5%	111
2002-03	79.2%	76.4%	42	80.6%	295	77.1%	119
2003-04	83.0%	87.0%	46	84.1%	350	79.7%	148
2004-05	*81.8%	88.0%	60	82.8%	483	77.1%	181
2005-06	*84.9%	83.9%	62	86.3%	395	81.2%	138

Table 16. Six-Year Graduation Rates (through Summer term) by Class.

Transfer Cohort	Total	Entering Class**					
		Sophomore		Junior		Senior	
		%	N	%	N	%	N
2000-01	78.7%	76.8%	245	81.5%	189	87.2%	34
2001-02	78.3%	75.6%	245	82.0%	178	82.9%	35
2002-03	79.2%	79.5%	225	80.3%	159	77.4%	48
2003-04	83.0%	78.7%	248	86.6%	203	86.9%	64
2004-05	81.8%	82.6%	322	82.5%	319	80.8%	61
2005-06	84.9%	81.0%	252	87.8%	270	88.9%	63

* significant difference ($p \leq 0.05$)

**Freshman class excluded from statistical calculations due to small numbers

Table 17. Six-Year Graduation Rates (through Summer term) by State Residency and Citizenship.

Transfer Cohort	Total	Georgia Residency				Citizenship			
		In-State		Out-of-State		US Citizen		Non-Citizen	
		%	N	%	N	%	N	%	N
2000-01	*78.7%	76.4%	333	84.0%	157	78.0%	439	85.0%	51
2001-02	*78.3%	75.6%	348	85.7%	144	76.5%	428	92.7%	64
2002-03	*79.2%	76.6%	307	85.6%	143	77.5%	382	90.7%	68
2003-04	83.0%	83.1%	388	82.8%	156	82.7%	480	85.2%	64
2004-05	81.8%	81.8%	544	81.7%	180	81.0%	645	87.4%	79
2005-06	84.9%	83.9%	479	88.8%	116	84.1%	548	93.6%	47

* significant difference ($p \leq 0.05$)